

# DEMA<sup>®</sup>

DISPENSING INNOVATIVE SOLUTIONS

## DISPENSING SYSTEMS CATALOG





## Customized Solutions

Customization at DEMA could mean anything from a custom label to a fully custom product. We will use our customized solutions to help build and enhance our customers' brands.

## Industry Experience

One of DEMA's competitive advantages is the breadth and depth of our experience we have within our customers' industries. This enables us to solve problems our competitors (and sometimes even our customers) can't. We are better able to develop and implement customized solutions that create value for our customers.

## Flexible & Responsive Operations

We welcome the opportunity to develop customized solutions that meet the unique needs of our customers. Each department at DEMA has a role in making this flexibility possible. The Sales team makes accessibility a high priority. Marketing effectively helps customers capitalize on the opportunity to enhance their branding and differentiation. Calls to Customer Service and Technical Support are answered by knowledgeable representatives.

## Cultural Commitment to Customers' Success

All DEMA departments stay close to and interact with customers. We listen first. We recognize our customers rely on DEMA products in their businesses so we hold ourselves to the highest standards of service. We think long-term and prioritize relationships over short-term financial gain.

# TABLE OF CONTENTS

## Housekeeping

- 2 Fusion Single Product Dispenser
- 2 Extreme 4 Locking Four Product Dispenser
- 3 Dilution-at-Hand™ Extreme Locking Multiple Product Dispenser
- 5 Blend Safe II Locking Multiple Product Dispenser
- 5 Stainless Steel Locking Multiple Product Dispensers
- 6 633 Blend Center Single Product Dispenser
- 6 681 Blend Center Multiple Product Dispenser
- 7 SafeLink™ Closed Loop Insert and Cap System
- 7 SafeLink MPD Multiple Product Dispenser
- 8 SafeLink One and DEMA One Portable Dispensers
- 9 FlexDose Waterless Portable Dispenser
- 9 Water Driven Dispensing Parts

## Food Service/Warewash

- 11 SuperSink Dispenser
- 11 Single and Dual Sink Dispensers
- 11 Faucet Adapter Kits
- 12 Wall Mounted Hand Pumps
- 12 Faucet Mounted Proportioners
- 13 Drain and Odor Control Dispensers
- 14 Titan II Warewash Dispenser
- 14 Titan, Nitro, and Nitro Plus Dispenser and Accessories
- 16 Olympian/Dart Single Product Warewash Dispenser
- 16 Solid/Powder Detergent and Rinse Bowls
- 16 Manual Bowl Dispensers
- 17 Electronic Solid Product Bowls
- 17 Mechanical Timer
- 17 Bowl Options and Availability
- 18 Warewash and Laundry Parts

## Laundry

- 20 Aurora Commercial and OPL Laundry Dispenser
- 21 Atlas OPL Laundry Dispenser
- 21 Out-of-Product Alarm
- 22 Magnetic Field Sensor
- 22 V-Line OPL Laundry Dispenser
- 22 V-Line Residential System Laundry Dispenser
- 22 844 Laundry Master II Stainless Steel Laundry Dispenser
- 23 Top Shot Single Product Laundry Dispenser
- 23 830 Series Laundry Master Dispenser
- 23 Sprint Single Product and Coin-Op Laundry Dispenser

## Industrial

- 24 Watch Guard Float Valve System
- 24 High Flow Dispenser
- 24 Drum Mount Dispenser
- 25 Rapid Fire Spray and Foam Dispenser
- 26 Wall Mounted Spray Dispenser
- 26 Portable Foam and Spray Dispenser
- 27 Compressed Air Foamer Dispenser
- 27 Mobile Compressed Air Foam System
- 29 MixRite Water Powered Injector System
- 31 Brass and Specialty Chemical Injectors
- 31 Rocket Chemical Injectors
- 32 EasyDose Universal Chemical Injection System
- 32 FlexFlow Piston Diaphragm Pump Chemical Injector

## Fusion Housekeeping Dispenser System

Fusion is the evolution of decades of innovation in water-driven dispensing technology smartly designed to make installations faster and easier. Servicing a Fusion, compared to others, is simpler and far less frequent. Sleek and attractive by design, Fusion is powered by the all-new Fusion Water Valve. Fusion Water Valve uses DEMA's reliable, well-known pilot valve technology in an advanced, smaller, and more efficient package.



**664G.A1A.E0  
Bottle Fill**

**664G.A1C.E0  
Bucket Fill**

### Features and Benefits:

- Innovative design for the modern housekeeping environment.
- Large push button for easy activation with optional lock-on for bucket filling.
- Premium branding space for chemical and company labels.
- Multiple options for branding, color coding and custom molding.
- Five stocked cover colors: grey, white, red, blue, and green.
- Easier to install with integrated bubble-level and keyhole slots.
- Easier to service with plug-n-play tool-less components:
  - Cover releases with a simple push and lift.
  - Easy access to diaphragm for fast preventative maintenance.
  - U-clips allow for quick coupling of multiple Fusion dispensers.

DISPENSERS	MODEL NO.
Fusion One, Bottle Filling, Action Gap	644G.A1A.E0
Fusion One, Bottle Filling, air gap	644A.A1A.E0
Fusion One, Bucket Filling, Action Gap	644G.A1C.E0
Fusion One, Bottle Filling, air gap	644A.A1C.E0

## Extreme 4 Dispensing System

The Extreme 4 is the next step in functionality, technology and design for our Dilution-at-Hand series of dispensers. A four-product locking enclosure designed for chemical bottles sized between one liter and three liter, and a half gallon (2 L) F-style fits perfectly. With neutral



tones, the Extreme 4 fits any brand profile with ease. Utilizing the latest advances in DEMA technology, one selector dial controls two selector valves allowing dilutions of up to eight different ratios through one control. Security is at a premium, with a six-point locking system controlled at one locking point. Offered in multiple variations, the Extreme 4 is built to meet a variety of needs.

### Features and Benefits:

- One enclosure secures chemicals and components plus minimizes size and wall space.
- One dial to control selector for both bottle and bucket products.
- Dilution at eight different ratios across bottle and bucket fill options.
- Remote fill option for easy filling of buckets and scrubbers.
- One-hand bottle fill allows operator more flexibility when filling spray bottles.
- Action Gap and air gap backflow options meet local plumbing agency requirements.



DISPENSERS	MODEL NO.
Bottle Fill, Push Button Bucket Fill	665GAP
Bottle Fill, Remote Bucket Fill	665GAPRF
Bottle Fill, Push Button Bucket Fill, SafeLink Ready	665GAP.SL
Bottle Fill, Remote Bucket Fill, SafeLink Ready	665GAPRF.SL

Note: Models listed are with Action Gap backflow preventer. For air gap substitute AG for GAP in part number (e.g. 665GAP becomes 665AG). Additional dispensers are available but not listed. Additional components may be needed to run products at multiple dilutions.

## Dilution-at-Hand™ Extreme Dispensing System

The Dilution-at-Hand (DAH) Extreme has a slim profile and enhanced color scheme that provides a modern appearance in any housekeeping environment plus multiple features to enhance productivity and dispensing flexibility. DAH Extreme offers the convenience of one-hand bottle filling and point of use remote bucket fill activation. Its modular design allows the dispensers to be used with or without locking cabinets and with or without selector valves for the ultimate flexibility from one to eight product options.

### Features and Benefits:

- Remote fill option for easy filling of buckets and scrubbers when location flexibility is required.
- One-hand bottle fill allows operator more flexibility when filling spray bottles.
- Action Gap and air gap backflow options meet local plumbing agency requirements.
- Sleek design and enhanced color scheme provides a modern appearance for end user accounts.
- Snap-together selector valve design reduces number of components from 14 to 5, and eliminates all metal components resulting in a maintenance free selector.
- Flow control disc improves dispensing accuracy with ultra lean dilutions compared to other dispensing systems.
- Optional half gallon (2 L) or one gallon (5 L) locking enclosures are available to meet today's various packaging sizes and feature:
  - Modular design allows any number of cabinets to be coupled together.
  - Built-in hinges improve cabinet durability.
  - Molded drip tray snaps into locking enclosure.



801GAP



802GAP



804GAPRF



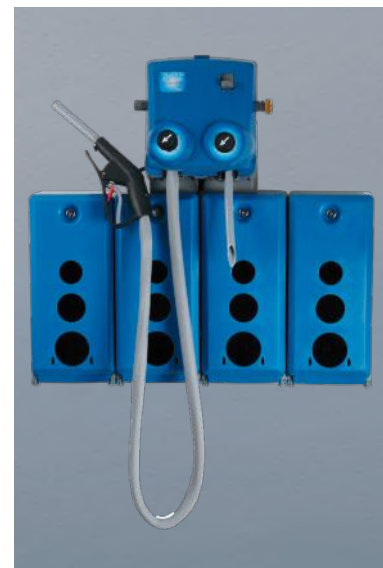
830GAPRF.Q1G



802GAPRF.S1G



801GAP.S1G  
ONE-HAND BOTTLE FILL



831GAPRF.Q1G  
REMOTE BUCKET FILL

## Single Station Options/One Fill Port Option

Single stations are available with the following options:

1. **Bottle fill or bucket fill.** Choose either low-flow bottle fill or high-flow bucket fill with activation at the unit or remote point of use activation.
2. **Dedicated single product or multi-product dilution.** Choose either a dedicated product fill port or a fill port with selector valve for up to four products or four dilutions.
3. **Stand alone or with locking enclosure(s) or rack.**
  - Choose from a variety of modular enclosures or rack systems for bottles sized anywhere between a half gallon (2 L) and one gallon (5 L).
  - The modular enclosures snap together to form any combination of cabinets.

## Dual Station-Two Fill Ports

Dual stations have two filling ports and are available with the following options:

- Bottle fill only, bottle and bucket fill or bucket fill only.**  
Choose any combination of low-flow bottle fill or high-flow bucket fill. Bucket fill is available with activation at the unit or remote point of use activation.
- Dedicated single product or multi-product/dilution at each port.** Each fill port can be dedicated to a single product or equipped with a selector valve for up to four products or four dilutions. With two filling ports, a dual station can dilute from one to eight products or eight dilutions.
- Stand alone or with locking enclosure(s) or rack.**
  - Choose from a variety of modular enclosures or rack systems for bottles sized anywhere between half gallon (2 L) or one gallon (5 L).
  - The modular enclosures snap together to form any combination of cabinets.



FLOW DISC



SELECTOR VALVE



BUILT-IN HINGE



822GAP



830GAP



831GAPRF

DISPENSER DESCRIPTION	MODEL NUMBERS						
	DISPENSER ONLY	DISPENSERS WITH LOCKING ENCLOSURE/S					
		SINGLE (ONE) ENCLOSURE		DUAL (TWO) ENCLOSURES		QUAD (FOUR) ENCLOSURES	
		1 GAL / 5 L	2 L / 1/2 GAL	1 GAL / 5 L	2 L / 1/2 GAL	1 GAL / 5 L	2 L / 1/2 GAL
<b>SINGLE STATION FOR 1 PRODUCT</b>							
Bottle Fill	801GAP	801GAP.S1G	801GAP.S2L				
Bucket Fill	802GAP	802GAP.S1G	802GAP.S2L				
Bucket Fill with Remote Activation	802GAPRF	802GAPRF.S1G	802GAPRF.S2L				
<b>SINGLE STATION WITH DIAL-A-BLEND SELECTOR (1-4 PRODUCTS)</b>							
Bottle Fill for 4 Chemicals	803GAP					803GAP.Q1G	803GAP.Q2L
Bucket Fill for 4 Chemicals	804GAP					804GAP.Q1G	804GAP.Q2L
Bucket Fill for 4 Chem. with Remote Activation	804GAPRF					804GAPRF.Q1G	804GAPRF.Q2L
Bottle Fill for 1 Chemical at 4 Dilutions	805GAP	805GAP.S1G	805GAP.S2L				
Bucket Fill for 1 Chemical at 4 Dilutions	806GAP	806GAP.S1G	806GAP.S2L				
Bucket Fill for 1 Chem. at 4 Dil. w/Remote Fill	806GAPRF	806GAPRF.S1G	806GAPRF.S2L				
Bottle Fill for 4 Chem. w/ 1 Hand Fill Only	809GAP					809GAP.Q1G	809GAP.Q2L
<b>DUAL STATION FOR 1-2 PRODUCTS</b>							
2 Bottle Fill Ports	820GAP			820GAP.D1G	820GAP.D2L		
1 Bottle and 1 Bucket Fill Ports	822GAP	822GAP.S1G	822GAP.S2L	822GAP.D1G	822GAP.D2L		
1 Bottle and 1 Bucket Fill w/ Remote Fill	822GAPRF	822GAPRF.S1G	822GAPRF.S2L	822GAPRF.D1G	822GAPRF.D2L		
2 Bucket Fill Ports	824GAP			824GAP.D1G	824GAP.D2L		
<b>DUAL STATION WITH DIAL-A-BLEND SELECTOR(S) (1-8 PRODUCTS)</b>							
1 Bottle Fill Port with Selector (up to 4 Chem.) and Bucket Fill for 1 Chemical	830GAP					830GAP.Q1G	830GAP.Q2L
1 Bottle Fill Port with Selector (up to 4 Chem.) and Remote Bucket Fill for 1 Chemical	830GAPRF					830GAPRF.Q1G	830GAPRF.Q2L
1 Bottle Fill Port with Selector 1 Chemical at 4 Dilutions and Bucket Fill for 1 Chem./Dilution	832GAP	832GAP.S1G	832GAP.S2L	832GAP.D1G	832GAP.D2L		
Dual Selector Valves for Bottle and Bucket 8 total products (1-4 each selector)	831GAP					831GAP.Q1G	831GAP.Q2L
Dual Selector Valves for Bottle and Remote Bucket 8 total products (1-4 each selector)	831GAPRF					831GAPRF.Q1G	831GAPRF.Q2L

Note: Action Gap back flow preventer listed. For air gap substitute AG for GAP in part number (e.g., 801AG). Additional dispensers are available and not listed.

Additional components may be needed to run product(s) at multiple dilutions.

## Blend Safe II Dispensing System

Blend Safe II is a modular dispensing system with the flexibility to be used with or without locking cabinets and options to dilute 1-4+ products with 2 fill rates. The cabinets come with removable drip trays, can be mounted vertically or horizontally and hold bottle sizes up to 5 liters (1.3 gal). Models listed include Action Gap backflow (To request air gap, use AG in part number instead of GAP).



66.148GAP.2



662.639GAP

## Blend Safe II Model Options

	DISPENSER ON NO CABINET	DISPENSER WITH CABINETS		
		1 CABINET	2 CABINETS	4 CABINETS
<b>Single Station (1 button)</b>				
Bottle Fill	66.144GAP.1	662.GAP.1		
Bucket Fill	66.146GAP.1	662.GAP.4		
<b>Dual Station (2 buttons)</b>				
2 Bottle Fill Ports	66.148GAP.1	662.2GAPDB.11	662.2GAP.11	
1 Bottle and 1 Bucket Fill	66.148GAP.2	662.2GAPDB.14	662.2GAP.14	
2 Bucket Fill Ports		662.2GAPDB.44	662.2GAP.44	
<b>4 Station (4 buttons)</b>				
4 Bottle Fill Ports			662.4GAP.1111.2	662.4GAP.1111.4
3 Bottle and 1 Bucket			662.4GAP.1114.2	662.4GAP.1114.4
2 Bottle and 2 Bucket			662.4GAP.1144.2	662.4GAP.1144.4
<b>Dial-a-Blend Systems</b>				
1 Product at 4 Dilutions	66.149GAP.2	662.635GAP.4		
4 Product Bottle and 1 Bucket	66.151GAP			662.639GAP
4 Product Bucket Fill	66.150GAP.2			662.637GAP.4
4 Product Bottle Fill	66.150GAP.1			662.637GAP.1
4 Product Bottle and 4 Product Bucket Fill	66.151GAP.2			

Note: Additional models available, contact DEMA Customer Service

## 661 + 664 Blend Safe Stainless Steel Locking Dispensers

The 661 Blend Safe Series offer safety and security when it is necessary for gallon bottles to be self contained inside the dispenser. Units are lightweight and have a mounting flange outside the dispenser for easy installation.

### Model 661GAPB

One station (1 gpm) with Action Gap backflow preventer.

### Model 661GAPDB

One station with two buttons (1 gpm and 4 gpm) with Action Gap backflow preventer.

### Model 661GAP.4

Four station with Action Gap backflow preventer (standard configuration is three 1 gpm proportioners and one 4 gpm proportioner).

### Model 661GAPS.4

Four station with Action Gap backflow preventer and stainless steel drip tray.



661GAP.4



661GAPDB

## Blend Safe Stainless Steel Quad

The Blend Safe Stainless Steel four product locking dispenser is the ultimate in safety and security when flexibility is needed. Capable of diluting at eight different ratios across both the bottle and bucket fill stations. Designed for half gallon (2 L) bottles, it's the perfect solution for dilution, flexibility, and security.



664GAPRF

## 633 Blend Centers



633GAP.B1

THREE 633GAP UNITS  
COUPLED TOGETHER

Blend Center's modular design lets you easily couple together any number of stations to create a system to meet your needs. Mix and match bottle and bucket fill and choose from blue, red, green, yellow, black, or white buttons. Models listed include Action Gap backflow (Use AG instead of GAP for air gap when placing orders).

### Model 633GAP.1

Action Gap backflow with 1 gpm (4 LPM) proportioner

### Model 633GAP.4

Action Gap backflow with 4 gpm (16 LPM) proportioner

## 681 Blend Centers

681 units are stainless steel and plastic cover dispensers. Models listed below include 4 gpm (16 LPM) proportioners but can be ordered with any combination of high/low flow.



681GAP.3P

681GAP.2

STATION	MODEL NO.	COVER MATERIAL
1	681GAP.1	Stainless Steel
2	681GAP.2	Stainless Steel
2	681GAP.2P	Plastic
3	681GAP.3	Stainless Steel
3	681GAP.3P	Plastic
4	681GAP.4	Stainless Steel
5	681GAP.5	Stainless Steel

## SafeLink™ - Adaptive Closed Loop System

SafeLink adaptive closed-loop no chemical contact system is designed to minimize chemical exposure when connecting and changing chemical concentrates in virtually any dispensing equipment. SafeLink is a two-part system with a chemical bottle insert used in chemical packaging and a cap assembly that attaches to any chemical dispenser.



The SafeLink insert fits in standard 38mm bottle necks and works easily in most chemical production environments.

SafeLink cap assemblies are designed for the toughest environments and work with any dispensing system for fast connection to chemicals and eliminates chemical exposure when connecting and changing products.

SafeLink minimizes exposure to chemical concentrates, enhances worker and environmental safety, controls usage and reduces cost. SafeLink is spill-proof, tamper-resistant and is built with an optional lock and key design to ensure use of the correct product within each dispenser or product position. With hundreds of dispensing and dosing options, DEMA can incorporate SafeLink into any equipment solution.

### The Closed-Loop System Components:

- The container insert fits inside the bottle neck and contains the chemical concentrate to ensure against leaks or spills and protects handlers from exposure.
- The cap adaptor connects the chemical concentrate container to the dispensing system opening the valve to complete the closed loop.
- The valve controls the accurate dilution and flow of the chemical to ensure performance, maximum efficiency and prevents backflow that could cause loss of prime.

## SafeLink Inserts and Cap Adaptors

SafeLink inserts and cap adaptors are available in 13 different colors to prevent mixing mistakes, and facilitates maintenance operations and training. SafeLink is available in red, brown, yellow, purple, grey, white (natural), blue, green, dark blue, orange, pink, black and light green colors.



Inserts

Caps



## SafeLink Inserts and Cap Adaptors

### Optional Features and Insert Designs

#### Spill Proof

Spill proof inserts eliminate potential leaking and greatly reduces potential worker exposure and misuse over typical closed-loop inserts but does not allow active venting for products that off-gas.

#### Active Vent

Active venting inserts are available for products that need to off gas.



#### Vent Plus

Featuring technology from both spill proof and active vent, Vent Plus inserts feature a ball-in-cage technology that allows products to actively vent when upright but seals off the insert vent hole when tipped on its side or knocked over.

Both designs are made with either standard chemical-resistant material for most chemical products or high chemical-resistant materials for the most corrosive and aggressive chemical concentrates.



#### Caustic Pin

Designed for products that are highly caustic like laundry and warewash detergents. These pins are constructed to be spill-proof in transportation and actively vent when installed at the use location.

#### Insert Lock and Keys

The different interfaces between cap and insert work as a lock and key. Different lock and keys allow you to ensure that the right chemical is at the right location. Exclusive keys are available to protect your equipment investment.

#### Insert Draw Tube Length

Four standard size draw tubes are available for bottles from 2.5 gallon (5 L), 1 gallon round and F-style (4 L) or 1/2 gallon (2 L). Custom tube lengths are also available.

#### Metering Tips

SafeLink is available with or without metering tips. Metering tips enable tamper resistant dilutions inside the chemical for pre-set dilutions from 1:4 to 1:512. No metering tip allows for changeable dilutions at the dispenser or proportioner.

#### Cap Barb Size

1/4" barbs are ideal for standard housekeeping and warewash dispensers. 3/8" barbs are designed for standard laundry dispensers.



#### Cap Barb Type

1/4" straight available in all colors. 1/4" 90-degree, 3/8" straight and 3/8" 90-degree available in white and limited colors.

## MPD System

MPD is the multi-product, multi-dilution dispenser designed for use with SafeLink closed-loop bottle inserts. MPD is designed for simple, fast and safe changeover from one product to the next.

Chemical containers connect and disconnect to the SafeLink quick dock with one simple, fast step. Simply push the container in and it automatically engages. When you're done filling, the container is easy to remove and SafeLink inserts keep the concentrated chemical away from the user.



### Features and Benefits:

- The easiest and safest to use multiple product dispenser designed for reduced training and end user simplicity.
- As the only secure spill-proof insert on the market, the MPD is readily available to any customer.
- Unique and customizable dilution dial has two dilutions per position with up to 12 different dilutions.
- Total chemical freedom with optional no-dial system using in-bottle metering.
- The most versatile dispenser, designed to handle concentrates from half gallon (2 L) to 1.5 gallon (5 L).
- Patented one-hand bottle fill for more flexibility when filling spray bottles.
- Remote fill option for easy filling of buckets and auto scrubbers when location flexibility is required.
- Action Gap and air gap backflow options to meet local plumbing agency requirements.

### Dial Options



6 Position



1 Position and Rinse

DISPENSERS	MODEL NO.
Dial Metering, Bottle Fill, Push Button Bucket Fill	1060GAP.6HK
In-Bottle Metering, Bottle Fill, Remote Bucket Fill	1061GAP

Note: Models listed are an example of options available. Many other configurations exist.

## Safelink One™

Designed to be safe, ergonomic and multi-purpose, the Safelink One (SL1) portable dispensing system continues the tradition at DEMA of creating products designed with the end user in mind. The SL1 reduces the need to fill at the supply closet and takes the dispensing system with the user. Need to fill the mop bucket on the spot? SL1 can do that. Need to spray down equipment? SL1 can do that too. The SL1 is the answer for all your on-the-go dispensing needs.

### Features and Benefits:

- Dual dilution proportioner with 24 possible metering options and multiple flow rate choices.
- Sprayer for maximum area coverage.
- Foamer designed with the ability to access hard to reach areas.
- Dual fill dispenser for filling spray bottles and mop buckets.

SL1 is an extension of the SafeLink closed-loop chemical management system. Continuing the tradition of SafeLink, the SL1 provides the end user with a spill and leak proof system. Additionally, you can utilize specialized proprietary lock-out keys ensuring that the right chemical is always being used in the right place.

### Customize your Safelink One model options



#### SL1S Single Fill

SL1S has in-dispenser or in-bottle metering, lock-on hands-free filling, and globally recognized built-in back flow protection.



#### SL1D Dual Fill

SL1D has two flow rates, dual dilutions, in-dispenser or in-bottle metering, lock-on hands-free filling, and globally recognized built-in back flow protection.



#### SL1SS.1 Single Fill with Basic Sprayer-Foamer

The Basic Sprayer-Foamer provides versatility and economy.



#### SL1DS.4 Dual Fill with Premium Spray/Foam Applicator

The Premium Spray/Foam Applicator, featuring 4' hose extension is the most practical and ergonomic solution on the market.

## DEMA One™



For products that can't use closed-loop inserts, DEMA has developed an open-feed portable dispenser designed for multiple product use. Based on the major design features of SafeLink One, the DEMA One offers a dip tube attachment. Sized for 38 mm neck openings and works with half gallon (2 L), one gallon (4 L) or 1.5 gallon (5 L) bottles.

Note: For additional information on custom bottles sizes, contact Dema Sales or Customer Service.

DISPENSERS	SAFELINK ONE™ MODEL NO.	DEMA ONE™ MODEL NO.
<b>Single-Flow-Dilution</b>		
Low Flow (1 GPM / 4 LPM)	SL1S.1	DM1S.1
Medium (2.5 GPM / 9 LPM)	SL1S.2	DM1S.2
High (4 GPM / 15 LPM)	SL1S.3	DM1S.3
Basic Spray / Foam	SL1SS.1	DM1SS.1
Premium Spray / Foam	SL1SS.2	DM1SS.2
<b>Multi-Flow / Dilution</b>		
Low / High Flow	SL1D.1	DM1D.1
Lean / Rich Dilution	SL1D.2	DM1D.2
Basic Spray / Foam	SL1DS.1	DM1DS.1
Basic Spray / Foam with Rinse	SL1DS.2	DM1DS.2
Premium Spray / Foam	SL1DS.3	DM1DS.3
Premium Spray / Foam with Rinse	SL1DS.4	DM1DS.4

PARTS AND KITS	MODEL NO.
Basic Spray and Foam Kit	52.100.1
Premium Spray and Foam Kit	52.100.3
Basic Sprayer Hose Assembly	52.33.9
Premium Sprayer Hose Assembly	52.33.6
Universal Foamer Attachment	52.34.1
Fill Tube Assembly	52.33.1

Note: Models listed are without backflow preventer. To order the Action Gap backflow preventer, add GAP to part number. (E.g., SL1S.1 becomes SL1SGAP.1 for built-in Action Gap backflow preventer). Additional dispensers are available but not listed.

## FlexDose Waterless Dispensing System

Incorporating the safety and accuracy of DEMA's SafeLink™ closed-loop inserts, the FlexDose dispenser is designed to provide common sense and safety solutions for waterless dispensing applications. Multiple configurations are available with dosing increments of 1/16, 1/8, 1/4, 1/2, and 1 oz pump strokes (2, 4, 7, 15, and 30 ml). Using our unique anti-reverse pull-pump, end users cannot partially dose a product, thereby avoiding typical issues found with other hand pumps on the market. The piston-style design ensures that even the leanest of doses is accurately delivering the right amount of chemical each and every time.



### Features and Benefits:

- Widest dosing range of any competitive system on the market.
- Dosing lock to avoid incorrect or partial dosing activation.
- Chemically compatible seals for the most common chemicals for housekeeping and food service applications.
- Large brand/instruction label area for clear direction and use.
- Designed with durability in mind, for years of service.
- With SafeLink:
  - Works with any Safelink connection.
  - Ideal for standard key, proprietary keys, or product keys for ultimate flexibility.
- FlexDose is also designed to work without SafeLink:
  - Standard 38 mm neck opening required.
  - 3 straw lengths for common 2 liter to 1 gallon bottles.

DISPENSERS	MODEL NO.
Single Dose, 1/16oz (2 ml)	FD.EA.00
Single Dose, 1/8oz (4 ml)	FD.EB.00
Single Dose, 1/4oz (7 ml)	FD.EC.00
Single Dose, 1/2oz (15 ml)	FD.ED.00
Single Dose, 1oz (30 ml)	FD.EE.00
Multi-Dose, 1/4, 1/2, 1oz (7,15,30 ml)	FD.EF.00
Multi-Dose, 1/16, 1/8, 1/4oz (2,4,7 ml)	FD.EG.00

## Proportioners and Backflow Preventors

All DEMA housekeeping dispensers use the same proportioners, backflow preventors and metering tips. Proportioners are available with flow rates of 4 gpm (15 LPM), 2.5 gpm (9.5 LPM) and 1 gpm (4 LPM). Standard proportioners are equipped with ASSE 1055 approved 16-30 Action Gap backflow preventors. Air gap backflow prevention is available with a 4, 2.5 and 1 gpm proportioner.



**16.30**  
Action Gap backflow preventor



**61.22.3**  
4 gpm proportioner



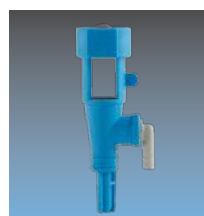
**61.22.3BAG**  
4 gpm air gap proportioner



**61.32BAG**  
1 gpm air gap proportioner



**61.99.2**  
1 gpm proportioner



**163AG**  
2.5 gpm air gap proportioner



**163CHA.B**  
2.5 gpm proportioner

## Accessories and Spare Parts

DEMA offers standard metering tips to achieve dilutions from 4:1 to 1024:1 and leaner. Metering tips are available in standard or custom packs.

### 100.15K

Tip kit with 16 tips for dilutions from 4:1 to 427:1

### 100.15KU

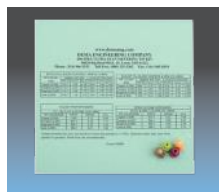
Ultra lean tip kit with 4 tips for dilutions from 150:1 to 915:1

### 44.61P

Capillary tip for dilutions of 512:1 to 1024:1 and leaner



**100.15K**



**100.15KU**

### 44.3.6

Six feet (2 meters) black hose



**44.3.6N**

### 44.3.6N

Six feet (2 meters) nylon hose



**66.43**

### 66.43

Pressure regulator (40 psi/2.5 bar) with GHT connections

### 68.6 Pressure Indicating Tee

Designed to protect faucet backflow devices that are not rated for continuous supply pressure and to virtually eliminate hot and cold water cross connection. This device is tested and complies with ASSE 1055-1997 and required by some state and local regulatory agencies. Check local plumbing regulations for backflow and connection requirements.



**68.6QD2**

### 68.6QD1

Tee with male Quick Disconnect

### 68.6QD2

Tee with male and female Quick Disconnect

### 100.16E

1/4" and 3/8" diaphragm foot valve with EP seal



**100.16E**

### 100.16S

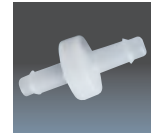
1/4" and 3/8" diaphragm foot valve with silicone seal

### 100.16V

1/4" and 3/8" diaphragm foot valve with viton seal

### 60.54

1/4" in-line viton diaphragm check valve



**60.54**

### 11.72.2

1/4" in-line EPDM ball and hastalloy spring check valve



**11.72.2**

### 100.12

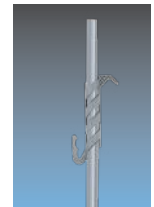
Eight feet 1/4" ID inlet tubing

### 61.21

Six feet 1/2" ID outlet tubing for Action Gap backflow preventer and proportioner

### 63.83

Six feet 9/16" ID outlet tubing for air gap proportioner



**89.28**

### 89.28.1

Plastic hose hanger for Action Gap proportioner

### 89.28.2

Plastic hose hanger for air gap proportioner

## Chemical Bottle Storage Racks

### 930.1R

One station non-locking rack for round bottles

### 930.1F

One station non-locking rack for F-style bottles

### 930

Three station non-locking rack

### 931

Three station locking rack

### 931.2

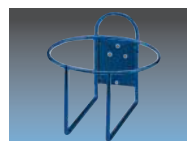
Two station locking rack

### 933.1F

One station non-locking rack for 2.5 gal F-style

### 98.119.1

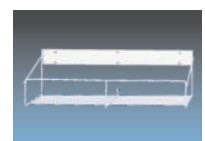
L Bracket for 933-1F side mounting



**930.1R**



**930.1F**



**930**



**931.2**



**931** (19 1/2" x 6 1/2")

## SuperSink Dispensers

The SuperSink dispenser works like a ball valve dispenser, without many service-related call issues. Using DEMA's patent-pending Fusion water valve design, we have developed a low profile sink dispenser ready for the most demanding installation environments.

Designed for DEMA FloRite™ technology, SuperSink provides dilution confidence in your detergents and sanitizers regardless of common water pressure fluctuations. SuperSink is loaded with other great features like quick access cover, easy and secure activation plus integrated strain relief.



SS651GAP

SS652GAP

### Features and Benefits:

- Sleek, modern appearance is great for open air kitchens.
- Durable, stainless steel with rounded edges found in plastic molded designs.
- Unique water valve has superior performance over ball valves.
- Significant advantages over traditional sink dispensers:
  - Easier to install and service with quick access cover and plug-n-play Fusion valve components.
  - Designed to eliminate common accidental misuse with positive on/off water valve.
- Brand and chemical label area maximized for correct product selection and training.
- Accepts any common water inlet configurations: GHT, Barb, Compression, and Quick Connect.

DISPENSERS	MODEL NO.
SuperSink One Product, Action Gap	SS651GAP
SuperSink One Product, air gap	SS651AG
SuperSink Two Product, Action Gap	SS652GAP
SuperSink Two Product, air gap	SS652AG

## Single and Dual Sink Dispensers

### Model ProFill 651

Single Sink Dispenser dispenses one product into a kitchen sink with the turn of a ball valve. Available with Action Gap or air gap backflow protection and compression or garden hose connection.

### Model ProFill 652

Dual Sink Dispenser dispenses two products into a kitchen sink with the turn of a ball valve. Available with Action Gap or air gap backflow protection and garden hose connection. It is also available with compression fittings and dual or single water inlet.

### Model Options

Both models have ASSE 1055 approval. Check local plumbing regulations for proper backflow. (To order either model with Action Gap, add GAP to the part number and AG for air gap [e.g., 651GAP] For compression fitting connection, add .1M after GAP or AG for 651 [.2M for 652]).



PF651GAP



PF652GAP

## Faucet Adapter Kits

### Model 68-4 Faucet Adapter Kit

Makes installing proportioning equipment over the sink clean and easy. The kit includes adapters for Chicago, Fisher, and T & S faucets. A pre-built manifold consisting of a tee, ball valve, and water hose allows user to control water flow to sink or dispenser.



68.4

### Model 68.4.2

Includes Fisher adapters only and manifold assembly

### Model 68.4.3

Includes Chicago adapters only and manifold assembly

### Model 68.4.4

Includes T & S adapters only and manifold assembly

### Model 68.21

T & S Scrap hose sink adapter kit

### Model 591

Water diverter valve screws on end of faucet and diverts water to dispenser by pulling a plunger while water is turned on.



591

## Wall Mounted Hand Pumps

Designed to pump detergent, sanitizer, or other chemicals into kitchen sink, bottle, dry cleaning machine, or any open container where chemical is mixed with water. Each push delivers one ounce (301 and 302) or two ounces (302 only) with the pump automatically maintaining its prime for future use.



### 301 Series

Features a smaller profile on the wall and delivers one ounce per compression. Standard model has stainless steel spring; optional hastelloy spring is available for chlorine and other harsh chemicals.

#### 301B

- Inlet and outlet check balls keep chemical in chamber and line primed.
- Stainless steel inlet and outlet fittings available (301B-SH).
- Push knob available in black (standard), blue, red and yellow.
- Silicone (standard), viton and EPDM O-ring seal available.

MODEL NO.	FLOW	SPRING	CHECK BALL
301B	1 ounce (30 ml)	Stainless	Stainless
301B.C	1 ounce	Hastelloy	Teflon
301B.SH	1 ounce	Stainless	Stainless



### 302 Series

Features large push area for easy activation, greater chemical resistance, and one or two ounce (30-60 ml) models.

#### 302.2S.SP (With optional spout)

- Polypropylene body and polyethylene bellows for chemical resistance.
- EPDM, silicone, or viton seals available on check valves.
- Optional spout available (part number 30.81.1).

MODEL NO.	FLOW	CHECK VALVE SEAL	BEST FOR
302.1E	1 ounce (30 ml)	EPDM	Detergent
302.1S	1 ounce	Silicone	Chlorine
302.1V	1 ounce	Viton	Solvent
302.2E	2 ounce (60 ml)	EPDM	Detergent
302.2S	2 ounce	Silicone	Chlorine
302.2V	2 ounce	Vito	Solvent

## Faucet Mounted Proportioners

DEMA Faucet Proportioners\* attach to any standard faucet and dispense a chemical and water mixture into the sink by either pushing a button or sliding a knob. Chemical dilution is determined by using metering tips on some units and a metering screw adjustment on others.

### Models 151 and 153

Use color-coded metering tips to determine dilution ratio.

- Standard tip kit is 100.15K
- Ultra Lean tip kit is 100.15KU

### Model 154

Use metering screw adjustment to determine dilution ratio

### Models 153 and 154

Includes a built-in ASSE-approved siphon breaker

### Models 167 and 167T

Uses a slide valve actuator to determine if a chemical solution is dispensed or water only. Unit is available standard with metering screw and metering tips.



#### Model 153



#### Model 167

\*Special adapters are available for faucet proportioners.

**150.9.2** Irregular faucet adapter (uses rubber sleeve and worm clamp to attach)

**150.21** Inside aerator thread adapter

**150.23** Outside Chicago thread adapter

**150.32** Inside Kohler thread adapter

## Trapper Drain and Odor Control Dispensing System

The Trapper combines all the required features of our existing drain and odor control products with advanced, yet easy to use features such as a digital programming display, multiple chemical pump options, quick change pumps, and a quick service battery pack with low battery alerts. Trapper is easily adaptable for odor suppression and deodorizing needs with a quick programming change and part swap.



2507A.E



2507B.E

**Features and Benefits:**

- Common sense, easy to understand with digital programming.
- 24/7 battery monitor with low battery warning.
- Water resistant components for under counter and low wall installations.
- Plug-n-go electrical hookup for quick and easy connect/disconnect.
- Tool-less quick change pump.
- Fast snap mounting bracket to quickly remove/reattach unit from wall for preventative maintenance.
- Easy switch between odor suppression and drain maintenance modes through simple programming.
- Odor suppression model uses a brass nozzle with a configurable spray pattern for stream to mist adjustments, becoming Trapper Odor Control.

**Trapper is available with three primary configuration options:**

- Drain or odor control.
- AC wall power (115/230VAC) or battery power.
- Three different squeeze tube choices (EPDM, PVC, Viton).

DISPENSERS	MODEL NO.
Trapper Drain w/AC power, EPDM	2507A.E
Trapper Drain w/battery, EPDM	2507B.E
Trapper Odor w/AC power, EPDM	2508A.E

## Additional Drain and Odor Control Dispensing Systems



257C Drain Chief



2500 Squirt

Drain Chief and Squirt models automatically feed chemicals into drains and grease traps to break up grease and detergent buildup and eliminate odors. Additional applications include odor control in dumpsters and trash chutes. Typical environments include food service, lodging, food processing waste processing, and water treatment.

**Model 257C and 257CV Drain Chief**

Both models operate on eight D-cell batteries or an optional wall plug. They use an electronic timer for dosing activations and are capable of up to eight feeds per 24 hours. The minimum run time per programmed event is one minute. Pump delivers four ounces per minute.

**Model 2500 Squirt**

The 2500 Squirt model operates on a 12 volt plug-in transformer. It uses an electronic timer for dosing activations and is capable of up to eight feeds per 24 hours. This small compact unit uses the Olympian pump platform. International versions are available with plug-in adapters.

**Model 259CT Pro Scentnal**

The Pro Scentnal unit is a 120 volt AC deodorizing dispenser that comes with an adjustable brass spray nozzle and delivers 18 ounces per minute. An electromechanical timer allows 1-48 doses per 24 hours, a circuit board controls pump run times of 10 seconds to 10 minutes per on time. This dispenser is intended for spraying deodorizing chemicals into dumpsters, compactors, trash chutes and other applications for odor suppression. The 259CT Pro Scentnal can be used without the spray nozzle as a traditional grease trap dispenser.



259CT Pro Scentnal



2504 Squirt DC

**Model 2504 Squirt DC**

Squirt DC uses the same timer and Olympian pump platform as the Squirt but operates on eight D-cell batteries. The electronic timer is capable of eight feeds per 24 hours and the batteries are housed in a splash resistant ABS enclosure.

## Titan Warewash Dispensers

### Probe and Probeless Operation with Auto-Switchover

DEMA's TITAN warewash dispensers were developed to reduce the number of service calls and create a more profitable installation. The unit can be set up in concentration, probeless or auto switchover mode. If set up in auto switchover mode, the unit will automatically switch over to probeless mode if any of the following conditions are met:

- Shorted, open, or limed-up probe
- Dispenser over feeds for period of time

Once the condition is resolved, the unit will switch itself back to concentration mode. This feature greatly reduces the number of service calls and allows for better use of service and sales groups' time.



T.813.DLL



T.812.LL

### Features and Benefits:

#### Enclosure

- Modular design allows for easy conversion to three products.
- ABS material for durability.
- Stainless steel mounting plate for easy wall removal.
- Digital display.

#### Pumps

- Quick change squeeze tube with no tools required.
- Quick connect fittings.
- Spring loaded two-roller design for extended tubing life.
- 16 ounces per minute with 60 RPM gear motor (detergent).

#### Electronics and Programming Specifications

- Programmable with keypad for quick setup.
- 100-265 VAC 50/60 Hz with auto-switching power supply.
- Pre-wired for quicker installation.
- Isolated trigger board for 24VAC to 480VAC.
- Probeless alarms for liquid or dry products.
- Diagnostic mode.
- Feed rate adjustment adapts to size of machine.
- Non-volatile memory allows pre-programming prior to installation.
- Built in rack counter.
- Multilingual display - English, Spanish, French and Portuguese.
- Programmable company information and service message to personalize dispenser.

MODEL NO.	NUMBER OF CHEMICALS	PUMP OR SOLENOID VALVE
T.811.L	1	Pump
T.811.D	1	Solenoid Valve
T.812.LL	2	Pump/Pump
T.812.DL	2	Solenoid/Pump
T.813.LLL	3	Pump/Pump/Pump
T.813.DLL	3	Solenoid/Pump/Pump

All models come complete with probe, detergent injection fitting, rinse injection fitting, mounting plate, and poly tubing.

## Titan, Nitro, and Nitro Plus Accessories:

### Model 81.23.1 Magnetic Field Sensor (MFS)

Unique technology reduces installation time and creates a safer environment for service personnel. The MFS is a wireless pump activator that eliminates the need for a direct electrical connection to activate the solenoid or pump.

- Provides electrical isolation from control circuits
- Eliminates the need to get into control box on warewash machine

### Model 82.28.1 Inductive Probe

Higher technology probe designed so the coils never see chemical or hard water in the dish machine, thus making it a non-service item.

- Significant reduction in probe maintenance
- Temperature compensation built into probe
- Helps maintain more accurate detergent concentration

### Out-of-Product Alarm (OPA)

The OPA was designed to be an integral part of the Titan II or Nitro and plugs directly into the board with out-of-product warning displayed on the dispenser keypad. Its unique design isolates electronics from chemicals eliminating the potential for attack.

- Wires directly to dispenser for use with up to three products.
- Audible alarm and out-of-product displayed for sanitizer, detergent and rinse.
- Alarm sensor has green and red LED for additional out-of-product ID.

**84.65.64** Sensor with 3/8" x 3/8" barb fitting

**84.65.65** Sensor with 3/8" x 3/8" JG fitting

**84.65.66** Sensor with 3/8" x 1/4" JG fitting

**84.65.67** Sensor with no fitting

## Nitro Digital Warewash Dispensers

The Nitro warewash dispenser line bridges the gap between compact basic dispensers and feature-packed units too large for small kitchens. Nitro has the versatility to be used with or without a probe from the same unit and delivers premium features in a compact size with reduced installation and maintenance requirements.



N.LL.TA



## Features and Benefits:

### Enclosure

- Compact design fits almost anywhere.
- Splash resistant ABS material for reliability and durability.
- ABS mounting plate for easy wall mounting and removal.
- Digital display.

### Pumps

- Proven Olympian pump platform
- Quick change pump cover for tool-less tube changing
- Entire pump easily removed by one screw for easy changing
- Detergent pump rate six oz per minute, rinse and sanitizer 1.35 oz per minute.
- Separate pump module for sanitizer

### Electronics and Programming Specifications and General Features

- Pre-wired power supply to reduce installation time
- 100-265 VAC 50/60 Hz with auto-switching power supply
- Isolated trigger board for 24VAC to 480VAC
- Password protected digital programming with keypad
- Built-in rack counter
- Multilingual display – English, Spanish, French, Portuguese
- Programmable company information and service message
- Optional magnetic field reader

MODEL NO.	NUMBER OF CHEMICALS	PUMP OR SOLENOID VALVE
N.LL.TA	2	Pump/Pump
N.DL.TA	2	Solenoid/Pump
N.LLL.TA	3	Pump/Pump/Pump
N.DLL.TA	3	Solenoid/Pump/Pump
O.ADC	1	Pump for Sanitizer

## Nitro Express Analog Warewash Dispensers



**O.ADC Nitro/NE Sanitizer pump module**

### NE.DL.A

Nitro Express is the compact multi-feature dispenser with analog DIP switches and potentiometer programming. It has many of the same non-digital features as Nitro.

MODEL NO.	NUMBER OF CHEMICALS	PUMP OR SOLENOID
NE.LL.A	2	Pump/Pump
NE.DL.A	2	Solenoid/Pump
* NE.LLL.A-NP	2	Pump/Pump
* NE.DLL.A-NP	2	Solenoid/Pump
NE.LLL.A	3	Pump/Pump/Pump
NE.DLL.A	3	Solenoid/Pump/Pump
O.ADC	1	Pump for Sanitizer

## Nitro Plus Warewash Dispensers

The Nitro Plus Warewash dispenser is the evolution of compact and versatile dispensers. It shares all those must-have features from the Nitro, now packaged for larger applications. Understanding the critical customer requirements, DEMA designed Nitro Plus as the feature-packed upgrade to Nitro. Ideal for conveyor and other large applications, Nitro Plus provides reliable chemical service to both large volume door and conveyor dish machines. Nitro Plus will meet and exceed the needs of general kitchen and food processing requirements!

Nitro Plus is built to last. Designed for total customization using DEMA's well known quick change modular pump platform, installation is simple with it's pre-wired system and service simplicity for reduced downtime due to service calls. Nitro Plus is the dispenser to get the job done right, everytime.

### Features and Benefits:

- Modular pump enclosure design features quick change squeeze tubes.
- ABS material for strength and durability in harsh environments.
- Digital display, programmable with company information and service messages.
- Pre-wired power supply to simplify installations.
- Smart hookup for wash and rinse trigger signals.
- Rack counter for door and conveyor dish machines.
- Password protected digital programming with keypad.
- Multilingual display – English, French, Spanish and Portuguese.
- Can be used with DEMA's inductive probe in problematic hard water situations.
- Works perfect with other DEMA accessories like Out-of-Product Alarm and the Magnetic Field Sensor.

MODEL NO.	NUMBER OF CHEMICALS	PUMP OR SOLENOID VALVE
NP.LL.T	2	Pump/Pump
NP.DL.T	2	Solenoid/Pump
NP.LLL.T	3	Pump/Pump/Pump
NP.DLL.T	3	Solenoid/Pump/Pump



### NP.LL.T

\*Two product systems shipped with three product board. It can also accept a sanitizer pump addition.

## Olympian and DART Mini Pumps

Ideal applications include under-counter washers, glass washers, and small commercial machines.

### Specifications

- Dual voltage (115/230 VAC) or high voltage only (230 VAC) models.
- Mini quick change pump allows tubing replacement in seconds.
- Complete pump assembly releases without tools.
- Units programmed via plug for two button programmer (Olympian) or potentiometer (Dart).



**O.PDV**



**O.RDV and O.SDV**



**DART**

MODEL NO.	APPLICATION	COLOR	SPECIFICATIONS
O.PDV	Detergent	White	110 or 220 volt, time
O.PHV	Detergent	White	220 volt, time
O.RDV	Rinse	Blue	110 or 220 volt, speed control
O.RHV	Rinse	Blue	220 volt, speed control
O.SDV	Sanitizer	Blue	110 or 220 volt, speed control
81.245.1	Programmer		2 Button Programmer
DART.DEJ	Detergent	Grey	Potentiometer
DART.REJ	Rinse	Grey	Potentiometer
DART.SEJ	Sanitizer	Grey	Potentiometer

## Detergent and Rinse Bowls

Detergent and Rinse Bowls dispense solid or encapsulated powders into dish machines, sinks, laundry machines, or any other open reservoir. DEMA offers two bowl designs for different applications that can be used for almost any solid product applications.

- Mount on any vertical surface or on top of a dish machine.
- Molded plastic or brass siphon breakers meet ASSE 1001 Standard.
- Compression and other fittings for easy and secure tube installations.



**5800V**



**5800V.RB**

**5800V** Includes wall mounting kit and bulk head fitting for dish machine use. Uses DEMA plastic siphon breaker. Brass siphon breaker available (5800V-B).

**5800.RB** Solid rinse bowl with wall mounting kit and bulk head fitting plus solenoid valve and level control (24 VAC standard voltage).

**5800.RB.4** Solid rinse bowl with wall mounting kit and bulk head fitting plus solenoid valve and level control for use with Titan II, Nitro, Nitro Plus, Nitro Express and DemaMaster NE dispensers.



**5800V.BV**

## Manual Bowl Dispensers

Uses a quarter turn ball valve to control water flow and dispense chemical into a kitchen sink or other reservoir. Needle valve controls chemical concentration by adjusting water flow. Water flow is directed through a vacuum breaker to meet plumbing codes.

## Electronic Solid Products Bowls

### Model 581KS.1W Solid Laundry Dispenser



581KS.1W

Suds JR is a machine triggered dispensing system designed to easily and economically dispense solid laundry products.

Programming is done with a removable two button programmer to avoid end user tampering. Color LED's indicate which function is running (delay, run time, and lock out) and which function is being programmed with the two button programmer.

- Maximum delay is 20 minutes
- Maximum lock out time is 75 minutes
- Maximum run time is 5 minutes or 40 ounces



5800V.KS2

### Super Bowl

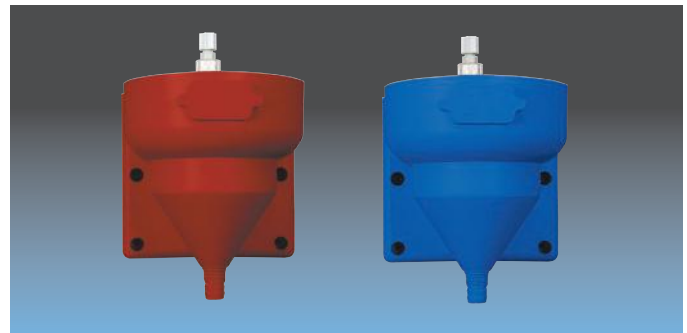
The SuperBowl is a battery operated solid/powder chemical dispenser for pots and pans, silver soak, or laundry applications. The circuit board has an adjustable run time of three seconds to five minutes, offers a mid-cycle shutoff, two, five, and 10 minute lockouts (or no lockout). KS1 and KS2 models can be triggered from a laundry machine and operated in timed or relay laundry operation. Warewash and laundry units are available as battery operated (four alkaline AA batteries) or with a plug in adaptor.

## Mechanical Timer



25.21.8

Mechanical timer needs no electricity or batteries and has a calibrated dial to control a timed water feed from 15-55 seconds. It can be used with 5800V, 5800V-B or other solid bowls.



Note: Red, blue and custom bowl colors are available (custom colors require minimum order quantities).

## Bowl Options and Availability

Custom colors and logos are available with minimum order quantities. Additional bowls not listed are also available. Contact DEMA customer service for most current models and additional information.

MODEL NO.	DESCRIPTION
<b>Detergent and Rinse Bowls</b>	
5800V	Viking Bowl with plastic siphon breaker
5800V.B	Viking Bowl with brass siphon breaker
5800V.RB	Viking Bowl with solenoid and level control (24 VAC)
5800V.RB.4	Viking Bowl with solenoid and level control (24 VDC) for use with Titan II, Nitro family and DemaMaster NE
<b>Manual Bowls</b>	
5800V.BV	Viking Bowl with ball valve and plastic siphon breaker
5800V.BV.B	Viking Bowl with ball valve and brass siphon breaker
<b>Electronic Bowls</b>	
581KS.1W	Viking Bowl with electronics
5800V.KSP1	Battery operated Super Bowl
5800V.KSP2	Super Bowl with plug-in adaptor
5800V.KS1	Battery operated Laundry Super Bowl
5800V.KS2	Laundry Super Bowl with plug-in adaptor
<b>Miscellaneous</b>	
25.21.8	Mechanical Timer
Colored Bowls	Minimums apply—contact Customer Service
Logo Bowls	Minimums apply—contact Customer Service

Questions? Contact DEMA Customer Service or your Regional Manager.

## Warewash and Laundry Pump Squeeze Tubing

MODEL NO.	TUBE MATERIAL	TUBE SIZE	LENGTH	FITTINGS INPUT/OUTPUT	APPLICATION
<b>Quick Change Blue Pump Tubes for Aurora, Titan and Atlas Dispensers</b>					
81.177.1	EPDM	7/16" OD X 1/4" ID	*	1/4" John Guest®	Warewash and Laundry
81.177.2	EPDM	7/16" OD X 1/8" ID	*	1/4" John Guest	Warewash -Rinse and Sanitizer
81.177.22	Silicone	3/8" OD X 1/4" ID	*	1/4" John Guest	Warewash -Rinse and Sanitizer
81.177.4	Silicone	7/16" OD X 1/4" ID	*	1/4" John Guest	Warewash and Laundry
81.177.5	Viton	7/16" OD X 1/4" ID	*	1/4" John Guest	Warewash and Laundry
81.177.6	EPDM	7/16" OD X 1/4" ID	*	3/8" Barb	Warewash and Laundry
81.177.8	Viton	7/16" OD X 1/4" ID	*	3/8" Barb	Warewash and Laundry
81.177.9	Silicone	7/16" OD X 1/4" ID	*	3/8" Barb	Warewash and Laundry
81.177.23	Santoprene	7/16" OD X 1/4" ID	*	1/4" John Guest	Warewash and Laundry
81.177.24	Santoprene	7/16" OD X 1/4" ID	*	3/8" Barb	Warewash and Laundry
81.177.25	Polysselect	7/16" OD X 1/4" ID	*	1/4" John Guest	Warewash and Laundry
81.177.26	Polysselect	7/16" OD X 1/4" ID	*	3/8" Barb	Warewash and Laundry
<b>Large Blue Quick Change Pump for Aurora, Atlas, 845 and 846 Dispensers</b>					
84.208.1	EPDM	5/8" OD X 3/8" ID	*	3/8" John Guest	Laundry and Industrial
84.208.2	EPDM	5/8" OD X 3/8" ID	*	3/8" Barb	Laundry and Industrial
84.208.3	Silicone	5/8" OD X 3/8" ID	*	3/8" John Guest	Laundry and Industrial
84.208.4	Silicone	5/8" OD X 3/8" ID	*	3/8" Barb	Laundry and Industrial
84.208.5	Viton	5/8" OD X 3/8" ID	*	3/8" John Guest	Laundry and Industrial
84.208.6	Viton	5/8" OD X 3/8" ID	*	3/8" Barb	Laundry and Industrial
84.208.7	Santoprene	5/8" OD X 3/8" ID	*	3/8" John Guest	Warewash and Laundry
84.208.6	Santoprene	5/8" OD X 3/8" ID	*	3/8" Barb	Warewash and Laundry
<b>C2 Pump tubes for DM 811 and 812 Dispensers</b>					
25.65CE.11	EPDM	1/2" OD X 1/4" ID	11"	None	Warewash and Laundry
25.65CV.11	Viton	1/2" OD X 1/4" ID	11"	None	Warewash and Laundry
25.65CA.11	Silicone	1/2" OD X 1/4" ID	11"	None	Warewash and Laundry
25.65CN.11	Santoprene	1/2" OD X 1/4" ID	11"	None	Warewash and Laundry
25.65RE.11	EPDM	1/2" OD X 3/16" ID	11"	None	Warewash -Rinse and Sanitizer
<b>C4 Pump tubes for DM 821 and 822 Dispensers</b>					
25.89CE.14	EPDM	5/8" OD X 3/8" ID	14"	None	Warewash, Laundry and Industrial
25.154.14	Silicone	5/8" OD X 3/8" ID	14"	None	Warewash, Laundry and Industrial
<b>Olympian Quick Change Pump for Olympian, Nitro, Nitro Express, Top Shot and Squirt Dispensers</b>					
81.231.1	EPDM	11MM X 5MM	*	1/4" Compression	Warewash, Laundry and other
81.231.6	Silicone	11MM X 5MM	*	1/4" Compression	Warewash, Laundry and other
81.231.4	EPDM	11MM X 5MM	*	Cone Fitting	Warewash, Laundry and other
81.231.5	Silicone	11MM X 5MM	*	Cone Fitting	Warewash, Laundry and other
* Fitted for appropriate DEMA pumps			Other tubing options available contact customer service		

## Warewash Probes and Fittings

## C.12VIK Detergent Flip Probe

82.28.1 Inductive Probe (Titan and Nitro only)

80.55 90° Fitting for Liquid Detergent Connection

81.260.1 Universal 90° Fitting Connection (3/8" or 7/8" hole size)

58.5 70° Injection Fitting for Bowl Connection

904.8S 1/4"Tube X 1/8" NPT Stainless Check Valve, Stainless Ball

904.8T 1/4"Tube X 1/8" NPT Stainless Check Valve, Teflon Ball

904.8KY 1/4"Tube X 1/8" NPT Kynar Check Valve, Stainless Ball

904.4T 1/8"Tube X 1/8" NPT Stainless Check Valve, Teflon Ball

## Solenoid Valves

## 442J.WW.4B

81.316.6 Solenoid Valve Kit for Nitro Family

81.118.19 Solenoid Valve Kit for Titan



## Warewash and Laundry Motors

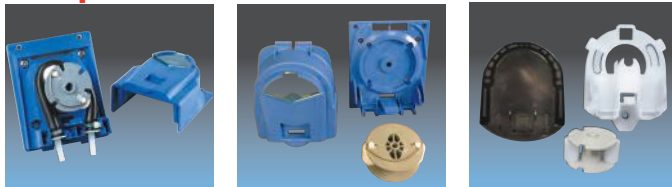
Model No.	Voltage	RPM	Dispenser
80.59.15MK.1	24 VDC	15 rpm	Titan and Atlas
80.59.60MK.1	24 VDC	60 rpm	Titan and Atlas
80.59.105MK.1	24 VDC	105 rpm	Titan and Atlas
81.13.115MK	115 VAC 60Hz	115 rpm	846
81.14.230MK	230 VAC 60 Hz	115 rpm	846
81.15.115MK	115 VAC 60 Hz	60 rpm	846
81.17.230MK	230 VAC 50 Hz	115 rpm	846
81.289.230MK	230 VAC 50/60 Hz	60 rpm	846
81.316.10	24 VDC	118 rpm	Nitro/Nitro Family
81.316.11	24 VDC	35 rpm	Nitro/Nitro Family

## Miscellaneous Parts

- 58.2** ASSE 1001 Approved Plastic Siphon Breaker with Fittings
- 80.66** 10" Pick Up Tube 1/4" ID
- 80.66.2** 18" Pick Up Tube 1/4" ID
- 81.312.1** 12" Pick Up Tube 1/4" ID
- 81.312.3** 17" Pick Up Tube 1/4" ID



## Pump Head Kits



**QC Blue Pump**      **Large Blue Pump**      **Olympian Pump**

### Quick Change Blue Pump

- 81.118.15** Detergent Pump Kit-2 Roller Spring Loaded
- 81.118.16** Rinse Pump Head Kit-3 Roller Fixed
- 81.118.17** Detergent Pump Kit-2 Roller Fixed

### Large Blue Quick Change Pump

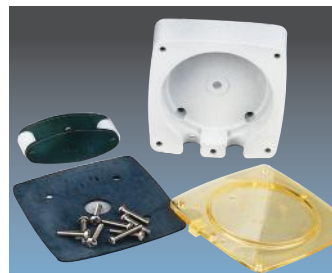
- 84.65.41** Pump Kit complete

### Olympian/Nitro Quick Change Pump

- 81.316.8** Detergent Pump Kit – 2 Roller complete
- 81.316.9** Rinse Pump Kit – 3 roller complete



**25.C2**

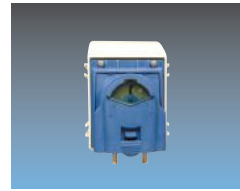


**25.130.1**

### C2 and C4 Pump

- 25.C2** Tri-Roller Rinse Pump Complete
- 25.C2D** Dual Roller Detergent Pump Complete
- 25.130.1** Large Pump Kit Complete

## Pump Modules



**QC Blue Pump Module**



**Large Blue Pump Module**

### Quick Change Blue Pump

- 81.118.18** 15 rpm Pump Module Kit
- 81.118.22** 60 rpm Pump Module Kit
- 84.65.29** 105 rpm Pump Module Kit with 3/8" JG fittings
- 84.65.30** 105 rpm Pump Module Kit with 3/8" Barb fittings
- 86.100.18.105EJ** 105 rpm Pump Module Kit 3/8" JG fitting for Aurora
- 86.100.18.105EB** 105 rpm Pump Module Kit 3/8" Barb fitting for Aurora

### Large Blue Quick Change Pump

- 84.65.36** 105 rpm Pump Module Kit with 3/8" JG fittings
- 84.65.37** 105 rpm Pump Module Kit with 3/8" Barb fittings
- 86.100.19.105EJ** 105 rpm Pump Module Kit 3/8" JG fitting for Aurora
- 86.100.19.105EB** 105 rpm Pump Module Kit 3/8" Barb fitting for Aurora



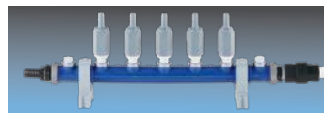
**84.65.32K**

### Valve Module Kits

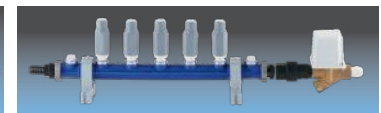
- 84.65.32K** Flush manifold valve and plumbing kit for ATLAS and V-Line
- 86.100.18.24DV** Flush valve kit for Aurora
- 86.100.18.24VDCK** Flush valve and plumbing kit for Aurora

## 951 Flush Manifold Series

951 Flush Manifold dilutes concentrated product with water and delivers chemical solution to laundry machines in a safe and efficient manner. Flush manifold comes complete with optional solenoid valve, and up to eight chemical inlets. Inlets are either 3/8" push on or 3/8" barb fittings. Units can be field converted from one connection to another.



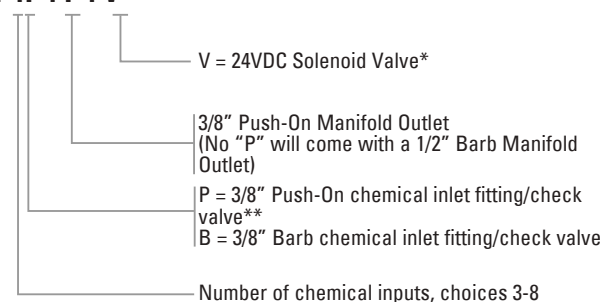
**951.5B**



**951.5PV**

### Options and Availability

**951 . 4P . P . V**



\*951 Manifolds can be setup with flush solenoid valve or without a flush solenoid to accommodate a valve mounted at the dispenser (84-35-32).

\*\*1/4" Push-On chemical inlet/check valve is available (951-4P-P14, 951-4P-P14V).

Questions? Contact DEMA Customer Service or your Regional Manager.

## Aurora On-Premise and Commercial Laundry System

Aurora Laundry Dispenser is the newest generation in Laundry dispensing technology from DEMA. Aurora enters the “smart device” connection and control era with a forward thinking program using Bluetooth technology for iPhone, iPad, Android devices and PC integration. Use your smart device to write and store programs, get service reports and access data from the Aurora Pro-Access interface module. The Pro Access controls up to eight pump stands and locally stores programs, wash data, service notes and reminders. Aurora blends smart device capable technology with the best features of DEMA’s legacy dispensers such as quick change pumps and durable pump gear motors.



### Features and Benefits:

- Expandable from 2 – 10 pumps (9 pumps and a flush).
- Multiple tube options handle virtually any chemistry.
- DIN rail mounting for fast installation.
- Programming:
  - On Pro Access.
  - On smart device (iPhone, iPad, Android, tablets) and PC.
- Data management including chemical usage, cost, loads counts, shift reports, invoicing and more.
- Out-of-product sensor capable.
- Dry contact compatible.

### DEMA Connect

Available in the Google Play™ or Apple AppStore, the DEMA Connect app is designed for programming, reporting and general interfacing with an Aurora system.



### Features and Benefits:

- Full programming of dispenser with formulas, units of measure, alarms and more.
- Create service reminders and reports:
  - Squeeze tube change out reminders.
  - Preventative maintenance activities.
- Customize products and formula names, develop a database of formulas for usage.
- On-screen and printable reports for end-user invoicing.
- Share formula programs and reports via email.
- Connect to dispenser for alerts on out-of-product alarms and maintenance history stored in dispenser.

### Aurora Connect Laundry Machine Interface

The Aurora Connect provides the trigger signal interface to the laundry machine and keeps high voltage at the machine and away from the dispenser. Bright LEDs indicate pump operation, making it easy to set-up and use.



### Pro-Access Control Module

Capable of controlling up to eight individual pump stands, the Pro-Access is a full color display programmer and data collection module. Durable keypad and splash resistant display, the Pro-Access can incorporate your brand label and on the digital display. Pro-Access connects to Bluetooth devices such as iPhones, Android devices, and PC's to make programming and data management fast and effective.



### Pro-Select Formula Selector

Optional multi-line formula selector remote provides an easy to use controller when the Aurora or Pro-Access is not readily accessible. Display shows formula names and load counts.



### 860.L2P4J.VP

#### ProSelect

P = ProSelect  
0 = No Pro Select

#### Flush Valve - Flush valve module is pre-wired and assembled to Aurora pump stand

V = Single Flush manifold valve  
D = Two flush manifold valves  
0 = No flush manifold valve

#### PUMP CONFIGURATION

Number of pumps and pump type (e.g.,  
2P = 2 pumps configured as “P” in the table,  
4J = 4 pumps configured as “J” from the table)

	Type	Connection
J	16 oz/min	1/4" JG READY
N	16/ oz/min	3/8" BARB
P	50 oz/min	3/8" JG READY
Q	50 oz/min	3/8" BARB

#### Pump Driver Location

L = Left side of pumps and flush valve  
R = Right side of pumps and flush valve  
C = Center, balanced with similar pumps and flush valves on each side

#### Base System

860 Aurora Laundry with ProAccess  
861 Aurora Laundry without ProAccess

## 844P Atlas Laundry System

Atlas is the premier on-premise laundry system with a unique modular design that provides up to seven pumps for greater flexibility. Atlas can accommodate two different pump sizes to handle an array of machines, capacities and applications. Choose between the industry-proven standard Quick Change (QC) blue pump for 16 ounce (475 ml) per minute or the Large Blue QC Pump for 50 ounces (1480 ml) per minute.

### Features and Benefits:

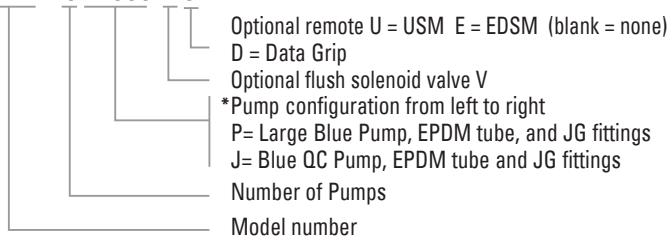
- ABS enclosure with formula select keypad and display
- Modular design that accommodates from two to seven pumps (six pumps with a flush manifold).
- Two quick change pump options for regular or large volume.
- Multiple tube options to handle virtually any chemistry.
- Quick connect John Guest or barb connection options.
- 100-265 VAC 50/60 Hz with auto-switching power supply.
- 24 VDC 105 rpm gear motors.
- Optional USM formula remote for user formula selection.
- Separate stand alone EDSM remote for programming and formula storage plus can be used for formula selection.
- Data collection and reporting capable through optional Data Grip (can be used for programming/formula selection).
- Order with no remote, USM, EDSM, or Data Grip.



## 844P.5PPJJJ.V

### Options and Availability

#### 844P . 5 PPJJJ.V U



\*Additional pump, tube and connection configurations are available. Contact customer service for additional models.

### COMMON MODELS:

Model No.	Description
844P.4JJJJ.U	4 Blue QC pumps with EPDM tubes, 3/8" JG fittings and USM remote
844P.5JJJJ.E	5 Blue QC pumps with EPDM tubes, 3/8" JG fittings and EDSM remote
844P.5NNNNN	5 Blue QC pumps with EPDM tubes, 3/8" barb fittings and NO remote
844P.5PPJJJ.U	5 pumps (2 Large Blue and 3 QC Blue) with EPDM tubes, 3/8" JG fittings, USM remote

## Programming, and Formula Select Remotes



84.65.38

### Enhanced Digital Select Module (EDSM) EDSM II Remote

The EDSM II is a hand-held remote used to program the Atlas and 846E dispensers and as an end user formula selector. It can store up to 30 formulas and program any number of Atlas or 846E dispensers.

The EDSM II can be customized with formula names, has multi-language programming and is password protected.

### Universal Select Module (USM) End User Formula Selector

The USM remotes are an optional formula selector for the Atlas and Laundry Master dispensers. The USM provides a convenient easy to understand formula selectors.



84.65.31  
(Used with Atlas & 844)

## Out-of-Product Alarm



Designed for use with the Atlas, 846E or as a stand alone system, the out-of-product alarm can be used for laundry, warewash or other applications when out-of-product notification is necessary. Visual and audible alarms are activated when the low level sensor is

triggered. An LED light with space to identify the product name on the unit identifies which product needs changing. Its unique design isolates electronics from chemicals thus eliminating the potential for attack.

- 84.65.48** Stand alone unit
- 84.65.49** Add-on unit for Atlas or V-Line OPL
- 84.65.64** Sensor with 3/8" x 3/8" barb fitting
- 84.65.65** Sensor with 3/8" x 3/8" JG fitting
- 84.65.66** Sensor with 3/8" x 1/4" JG fitting
- 84.65.67** Sensor with no fitting

## Magnetic Field Sensor

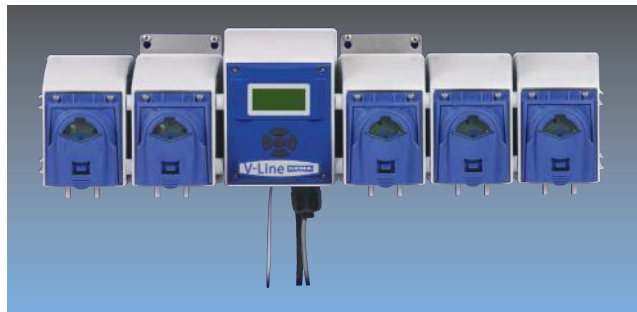
DEMA's Magnetic Field Sensor is the unique pump activator that requires no machine wiring to simplify installation, reduce install time and create a safer environment for the installation. It can be used on Atlas and V-Line.



82.23.1

- Sensor attaches easily to drain valve and activates the pump in SEQUENCE mode.
- Provides laundry machine interface for sequence or drain mode applications and multiple signal applications.

## V-Line OPL



8410J.50

V-Line is the perfect on-premise laundry system for smaller facilities where value and flexibility are critical but performance must be second to none. V-Line features a modular design to accommodate up to six pumps and uses the proven performance of DEMA's standard Quick Change blue pump at 16 ounce (475 ml) per minute or the large blue QC pump for 50 ounces (1480 ml) per minute.

### Features and Benefits:

- Designed to be fast and convenient for smaller OPL installations.
  - Pre-wired for main power and trigger signals.
  - Optional Magnetic Field Sensor eliminates direct trigger wiring.
  - Easy to copy programming from one dispenser to another
- Can be used with up to six pumps or five pumps with a flush manifold.
- Intuitive menu driven programming on dispenser.
  - Digital display in four languages - English, Spanish, French and Portuguese.
  - Program up to nine formulas with password protection.

## V-Line RS

V-Line RS is designed to handle residential style and other smaller machines when few products are required but multiple formula choices are needed.

V-Line RS features a modular one or two pump design using DEMA's proven quick change blue pumps and the new IQ 50 board for up to nine formulas.

### Features and Benefits:

- Simple mount and plug two step installation with factory installed stainless wall bracket and power cord with plug.
- Simplified setup with factory pre-programming for 1-2 pump operation and user start operation mode.
- Easy user activation with remote start module or intuitive button on dispenser.
- Easily expandable from three to six pumps for OPL applications.



8410RSJ.20

### Operator Select Module (OSM)

The OSM remotes are an optional formula selector for V-Line dispensers. The OSM provides convenient, easy to understand formula selectors.



84.65.53  
for V-Line



844.40BBBB0

## 844 Laundry Master II

The 844 is a smaller stainless cabinet that can be equipped with three to eight pumps, uses the USM for formula selection and has on-board programming. The 844 can be equipped with the QC Blue Pumps or the C2/C4 pump.

### Features and Benefits:

- Stainless steel enclosure accommodates up to eight pumps.
- Four pump options with volume from 10 ounces (300ml) per minute to 50 ounces (1480ml) per minute.
- 115-230 VAC 50/60 Hz power supply (smart voltage hookup).
- Multiple tube options to handle virtually any chemistry.
- 20 formula capability and separate USM formula remote.
- On-board digital (IQ-81) programming.



## DEMA Laundry Features

All DEMA Aurora, Atlas 844, and V-Line OPL Systems have these common features and modes:

**AUTO FORMULA SELECT:** Allows laundry machine microprocessor to choose formula soil classification by sending an appropriate length signal to main control board.

**RELAY:** Allows laundry machine microprocessors to control all functions of the dispenser. It will accept any number of programs sent by the laundry microprocessor.

**SEQUENCE:** Used on non-programmable, fixed time, and older machines that do not have adequate programming functions. It operates by counting drain closings and pumping pre-determined amounts of product at correct drain closing.

**MANUAL FORMULA SELECT:** Nine formula keypads allow non-microprocessor laundry machines to have specific formulas for various soil classifications. Both keypads have bleach defeat and emergency stop buttons.

## 8400 Top Shot



### 8400

Top Shot is a low cost option for home style laundry machines and perfect for self serve, low volume or special one product applications. Top Shot is designed using the proven Olympian platform and is ideal for home style up to 75 lb (35 kg) commercial machines and available with EPDM or Silicone Squeeze tubes.

**8400 Top Shot** Single product with remote start and installation kit  
**8401 Top Shot** 230 V International model  
**81.245.1** Remote programmer needed for 8400

## 830 Series Single and Dual Product

830 Series Laundry Master dispensers are designed to dispense one or two products into top loading, coin operated, and other laundry machines up to 100 lb (45 kg) capacity. Pumps are triggered by a signal from the laundry machine or by pushing the start button.



### 830K.1.1

**830K.1.1** Single product with installation kit  
**831K.1.1** Two product laundry with installation kit  
**83.R1** One button remote start switch  
**83.R2** Two button remote start switch

Additional models are available, please contact Customer Service.

## Sprint Single Product Laundry Dispenser

Sprint offers an economical and simple approach to basic laundry needs. Its physical size and pump performance makes it perfect for small OPL applications such as residential and coin-operated laundry machines. The system can accommodate laundry detergent, bleach, or softener chemical products. The Sprint uses a control board to program the run and lock out time settings, making dosage adjustments as simple as a turn of the knob.

### Features and Benefits:

- **Prewired** – Connect to a 24, 115 or 230VAC source that will provide a chemical charge while the laundry machine is filling.
  - Prewired trigger signal for 24-230VAC source.
- **Mounting bracket** – Attach the mounting bracket to the wall with screws and anchors that are included in the installation kit.
- **Compression nuts** – Connect the chemical pickup and discharge lines to the spring pump using the ¼” compression nuts on the inlet and outlet of the pump.
- **Pump runs at six oz/min (180 ml/min).**
- **Run and lockout time** – Adjustable run and lock out times make Sprint a versatile tool for a variety of needs. Run times are available between 10-70 seconds (with one second increments) and lockout time is in intervals of 0, 20, 25, 30, 35 and 40 minutes. Programming is as simple as turning a knob.
- **Service** – With a quick change pump, Sprint can be easily serviced within a matter of minutes, instead of hours.



### DISPENSERS

### MODEL NO.

Sprint with EPDM and Cone Fittings	SL1S.1
Sprint with EPDM and Compression Fittings	SL1S.2
Spring with PVC and Cone Fittings	SL1S.3
Spring with PVC and Compression Fittings	SL1SS.1
Sprint with Silicone and Cone Fittings	SL1SS.2
Sprint with Silicone and Compression Fittings	SL1D.1



440.23BT

## 440 Watch Guard Reservoir Mounted Float Valve System

Watch Guard is designed to reduce service and potential problems with more reliable water valve activation. The float is filled with water soluble material and the 90° chemical barb rotates 180° to ensure the chemical pick-up tube does not kink.

- Mounting bracket included with every system.
- On/Off valve included on all 440 chemical series systems.
- Metering tip kit included with every unit.

MODEL NO.	DESCRIPTION
440.23BT	4 gpm flow rate Action Gap backflow protection.
440.24	2.5 gpm flow rate Action Gap backflow protection.
437P.21	22 gpm flow rate with siphon breaker.
440N	6 gpm (water valve only).
437PN	64 gpm (water valve only).

## High Flow Dispensers

### Model 607.3

High Flow dispenser fills auto scrubbers and other large reservoirs at 10 gallons per minute (40 liters per minute) to reduce fill time.

- 10 gpm flow rate at 40 psi (3/4" or larger water supply required).
- Vacuum breaker installed.
- 10 feet discharge hose.
- Metering tips determine dilution ratio.
- Stainless steel cover offers durability and industrial appearance.
- PVC proportioner allows dual chemical injection.



607.3

## Drum Mount Dispensers

**Model 161 and 162** - Drum mount dispensers mount to any 2 1/2" bung opening to dispense chemical solution directly from the drum or tote at the correct dilution. Various models are available to meet standard and high induction applications.

**Model 162** - Standard model dispenses five gpm (20 liters per minute) with maximum induction of 5-1, metering screw adjustment.

**Model 162.3** - Standard model dispenses five gpm with a maximum induction of 5-1, metering tip adjustment.

**Model 161** - High induction model dispenses five gpm with a maximum induction of 1.5-1, brass construction with metering screw adjustment.

**Model 162HC** - High induction model dispenses half gallon per minute (2 liters per minute) with a maximum induction of more than 1-1 ratio. Ideal dispenser for applications such as antifreeze mixing where more product than water is required.

**Model 162HDM.2** - High Flow Drum Mount Proportioner mounts directly to a 2 1/2" bung opening on a drum or tote and dispenses at 10 gallons per minute (40 liters per minute). Draws up to 12 ounces per gallon of chemical solution and discharge hose can be up to 25 feet (8 m) long. Shutoff valve (DEMA #90-15) can be inserted at the end of hose for on/off control and uses metering tips to determine dilution ratio.



162HDM.2



162HC



162

## Rapid Fire Spray and Foam Dispenser

### Effective cleaning and sanitizing for:

- Supermarket meat room, seafood, and bakery departments
- Kitchens and food preparation areas
- Locker rooms and showers in schools and health clubs
- Food processing and packaging plants

### Features and Benefits:

- Single knob to control water flow and chemical selection
  - Full water flow when valve opens
  - Accurate dilutions
  - Eliminates confusion
  - Prevents mixing of chemicals
- Removable Injector
  - Easy maintenance and replacement
- Built in foam wand hanger
  - Helps prevent foam wand loss or damage



6300.3

### Specifications:

- Dimensions  
8" W x 9 1/4" H x 5 3/8" D  
(203 mm x 235 mm x 137mm)
- 2.7 gpm (10 L) Injector Flow Rate
- Operating Range 20-125 psi (1.3 - 8.6 bar)
- Water temperature up to 160°F (71°C)
- Functions with up to 50 feet (15 meters) of 1/2" (13 mm) ID hose
- Optional hose hanger with hose strain relief feature
- Stainless steel enclosure and chemical resistant polypropylene internal components

### MODEL NUMBERS AND KITS

6300	2 product dispenser includes metering tip kit, chemical pick-up tubing, foot valves with weights, wall mounting kit and label pack
6300H	2 product dispenser includes <b>same as 6300 plus</b> stainless steel hose hanger w/strain relief
6300.2	2 product dispenser includes <b>same as 6300 plus</b> hose rack, 25' red outlet hose, 6' black inlet hose, ball valve spray gun/foam wand
6300.3	2 product dispenser includes <b>same as 6300 plus</b> hose rack, 25' red outlet hose, 6' black inlet hose, pistol valve spray gun/foam wand
6300.4	2 product dispenser includes <b>same as 6300.2 plus</b> 44-89-112 constant pressure back flow preventer
6300.5	2 product dispenser includes <b>same as 6300.3 plus</b> 44-89-112 constant pressure back flow preventer
6310	1 product dispenser includes metering tip kit, chemical pick-up tubing, foot valves with weight, wall mounting kit and label pack

### ACCESSORIES

44.3RG	25 feet (8 meters) red hose
44.3N.25	25 feet (8 meters) clear nylon braided hose
44.3.6	6 feet (2 meters) black hose
44.3N.6	6 feet (2 meters) clear nylon braided hose
40.140D/2920D	Ball valve activated spray gun with quick connect foam wand
28.10D	Lever controlled spray gun with quick connect nozzle
2920D	Quick connect foam wand
44.89.112	ASSE 1012 approved constant pressure backflow preventer
44.111.1560	Brass nozzle with quick connect groove
44.111.1560SS	Stainless steel nozzle with quick connect groove
44.6	Stainless steel hose hanger

Additional hoses, spray guns, foam wands, nozzles, and other accessories are available. Questions? Contact DEMA Customer Service or your Regional Manager.

## SprayClean Accessories



**28.1QD and 292QD**  
Spray Gun and Foam Wand set  
(order items separately)



**40.14QDSS/292QD**  
Spray Gun and Foam Wand set



**44.89**  
Constant pressure back flow  
preventer



**44.3N.25**  
25 feet (8 m) nylon braided  
outlet hose  
**44.3**  
25 feet (8 m) black outlet hose  
**44.3RG** (shown)  
25 feet (8 m) red outlet hose



**44.3N.6**  
6 feet (2 m) nylon braided water  
supply hose  
**44.3.6** (shown)  
6 feet (2 m) black water supply  
hose  
**44.4S**  
Stainless steel hose bracket

## Wall Mounted Dispensers

DEMA manufactures a variety of SprayClean dispensers to meet different cleaning environments. Whether it's a wall mounted unit for cleaning one area or a mobile unit that offers portable cleaning, DEMA can satisfy the requirement. You can wash, rinse, and sanitize from the same system.



**606T.2**

**Model 606T.2 Spray Station II**  
The Spray Station II is a wall mounted ball valve actuated two chemical and rinse system. The unit features easy to turn large handles and a chemical and impact resistant ABS cover. It's designed for greater durability, reliability and easier serviceability.



**606T**

**Model 606T Select-O-Matic**  
Ball valve actuated SprayClean that dispenses two chemical products and clear rinse.

- Stainless steel cover.
- Polypropylene injectors for chemical and hard water resistance.
- Brass internal components.

## Portable Foaming and Spraying

**Model 289**  
ProFoam hose end foamer and sprayer attaches to the end of any garden hose and produces a foam when the aerating wand is attached and sprays when the wand is removed. Quick disconnect allows spray gun to be easily removed from dispenser for clear water rinse. Ideal applications include supermarkets, food service areas, and shower rooms where portability is required. Unit includes a 32 ounce bottle and spray gun with quick disconnect fittings.



**289**

## Compressed Air Foamers

### Model 294

Mixes chemical solution with water and air to produce a dry, thick, clinging foam to any vertical or horizontal surface for cleaning large areas and areas that require a foam to penetrate for better cleaning results. The foam consistency is easily changed by adjusting either the air or water pressure. PVC body is designed to prevent hard water and chemical buildup to help produce consistent, long term cleaning results.

Applications include:

- Food processing plants
- Truck and vehicle washing
- Bakeries
- School shower areas
- Other industrial areas

### Model 294D

PVC compressed air foamer body with air inlet port, air adjustment gauge, water inlet connection and tubing for chemical supply. Simply hook up compressed air and water and adjust to produce desired foam. Metering tips determine the correct chemical dilution. Minimum recommended air and water pressure with 25 feet of hose is 40 psi.



294D



294DC

### Model 294DC

Designed for applications that require a compressed air foamer enclosed in a stainless steel housing and ball valves for on/off control of water and air. Air pressure gauge is visible through the front cover and is easily adjusted while the unit is mounted. Metering tips determine the correct chemical dilution.

### Model 93.18

PVC Foam wand used with all DEMA compressed air foamers. Includes water inlet coupling, ball valve for on/off control, and nozzle. Foam throw varies based on water and air pressure mixture. Average throw is 25 feet (8 m).



93.18

### Model 93.14

25 feet 3/4" ID black water outlet hose. 3/4" ID hose is recommended to minimize back pressure load on foamer.

#### MAXIMUM HOSE LENGTHS AND MINIMUM PRESSURES FOR GOOD FOAM

HOSE SIZE AND LENGTH	MINIMUM PRESSURES	
	Water	Air
25 feet (8 meters) of 3/4" ID	40 psi (2.7 bar)	40 psi
50 feet (15 meters) of 3/4" ID	50 psi (3.4 bar)	40 psi
75 feet (25 meters) of 3/4" ID	60 psi (4.1 bar)	40 psi

## FoamStation Dispensers

FoamStation dispensers are wall mounted or cart mounted compressed air foaming systems that use DEMA's 294D PVC foamer body. Applications for these units include all food processing and food service areas, industrial plants, school shower areas, and other areas that require foaming chemicals for cleaning.

Units require an air compressor and at least 40 psi water pressure to produce quality foam.

- PVC foamer body for chemical and hard water resistance.
- Polypropylene cover offers neat appearance.
- Stainless mounting plate for sturdy mounting.
- PVC manifold with slip together fit offers easy field maintenance.
- Metering tips determine dilution ratio.

### Model 692T

Two ball valves provide one foaming chemical and clear rinse from this wall or cart mounted unit.

### Model 693T

Three ball valves provide one foaming chemical, clear rinse, and a sanitizer (or other chemical product) spray. The sanitizer product is run through DEMA's P203CT injector that flows at 2.7 gallons per minute (10.25 liters per minute).

### Model 93.18

PVC Foam wand with plastic ball valve can be used with any of DEMA's compressed air foamers. The durable material can be used with corrosive chemicals, including many acids.



692T



693T

## Mobile Series Compressed Air Foamers



### 900-2PU

#### 900 Pump Up Foaming Dispenser

The 900-2PU pump-up foamer technology provides spot cleaning and sanitation solutions for the industrial and institutional markets. Patented dual tube technology draws the chemical and air from the tank into separate tubes creating thick foam when mixed at the trigger-operated foam wand. Air tube flow is controlled by a needle valve enabling the operator the ability to control foam consistency.



### 900-WALL

#### 900 Wall Mounted Foaming Dispenser

The 900-WALL operates with a pre-mix solution of foaming chemical and water. The unit produces 30 gallons of foam per minute and covers 5-10 cubic feet per minute at 40-80 PSI with up to 25 feet of foam distance.



### 925N

#### 925N Mobile Foamer

The 925N is a 25 gallon portable foamer that offers innovative features and ergonomics for industrial and institutional foam cleaning. This unit's four-wheel design allows for a wide range of mobility and the convenient drain feature allows for easy drainage.



### 910N

#### 910N Portable Foamer

The 910 offers an innovative 10 gallon tank design that allows for easy storage and institutional foam cleaning. The non-pressurized tank promotes safety and consistent foam time after time.



### 900-DS4

#### 900-DS4 Doorway Foaming Sanitizer System

The 900-DS4 doorway sanitizer foaming system allows the control box to be mounted up to 150 feet away from the spray tip assembly. The new foam enhancing nozzle is constructed of stainless steel and produces large amounts of foam. This allows for shorter run times and a larger foam coverage area. The 900-DS4 can operate up to three nozzle assemblies simultaneously.

Note: Air compressor is not included with dispensers but is required to use with all DEMA compressed air systems.

## MixRite Water Powered Proportioning Pump

MixRite water driven injectors are water powered proportioning pumps that require no electricity and deliver accurate dispensing across varying water pressure and flow. MixRites use only 10% of the pressure at mid-range to drive the pump (20% maximum) and are easy to adjust and service.

### Specifications:

- Chemical resistant nylon with reinforced fiberglass body on all models (except PVDF).
- CW models feature stainless steel springs.
- CL and PVDF models feature hastelloy springs.
- Chemical shutoff on 571, 573 and 575 units.
- Easily replaceable wear parts.
- Higher operating range from 2.9 PSI to 120 PSI.
- Hose barbs with swivel for easy installation.
- Injection from 1000:1 to 10:1 (.1% to 10%).
- Flow rate from .09 to 11 gallons per minute.
- Includes 7 ft. 3/8" inlet tubing with foot valve strainer.
- Dimensions: 19 1/2" high, 7" wide.
- Optional Tip Kit for dilutions from 750:1 to 2000:1.

**1410A and 1410M Units are available for richer inductions from 1000:1 to 10:1**

### Applications:

- Vehicle wash.
- Food and beverage sanitizing, cleaning and lubricating.
- Machine tool coolants and metal processing.
- Animal medication.
- Food service sanitation.
- Fertigation (fertilizer/irrigation injection).
- Other applications that require applying liquid under pressure.



571 CW



1410 A



1401M



570 PVDF

MODEL NO.	PSI	RATIO	PERCENT	OZ/GAL	FEATURES	APPLICATIONS
566AG	2.9-120	100:1	1% Fixed	1.28	Chemical On/Off	Food & beverage, fertilization, vitamins, mild chemicals
568AG	2.9-120	128:1	.8% Fixed	1	Chemical On/Off	Food & beverage, fertilization, vitamins, mild chemicals
569CW	2.9-120	1000:1 to 111:1	.1% - .9%	.13 to 1.2	Chemical On/Off,	Carwash cleaning agents & detergents
570CW	2.9 - 120	300:1 to 50:1	.3% - 2%	.38 to 2.5	Tip Kit	Option carwash cleaning agents & detergents
571CW	2.9 - 120	300:1 to 50:1	.3% - 2%	.38 to 2.5	Chemical On/Off, Tip Kit Option	Carwash cleaning agents & detergents
572CW	2.9 - 120	250:1 to 25:1	.4% - 4%	.51 to 5.1		Carwash cleaning agents & detergents
573CW	2.9 - 120	250:1 to 25:1	.4% - 4%	.51 to 5.1	Chemical On/Off	Carwash cleaning agents & detergents
1410A	2.9 - 120	100:1 to 10:1	1% - 10%	1.28 to 12.8		Hydrofluoric acids, tire cleaners, chlorine, & other harsh chemicals
1410M	2.9 - 120	100:1 to 10:1	1% - 10%	1.28 to 12.8	Chemical On/Off	Hydrofluoric acids, tire cleaners, chlorine, & other harsh chemicals
1402A	2.9 - 120	300:1 to 50:1	.3% - 2%	.38 to 2.5	Tip Kit Option	Hydrofluoric acids, tire cleaners, chlorine, & other harsh chemicals
1402M	2.9 - 120	300:1 to 50:1	.3% - 2%	.38 to 2.5	Chemical On/Off, Tip Kit Option	Hydrofluoric acids, tire cleaners, chlorine, & other harsh chemicals
1405A	2.9 - 120	100:1 to 20:1	1% - 5%	1.28 to 6.4		Hydrofluoric acids, tire cleaners, chlorine, & other harsh chemicals
1405M	2.9 - 120	100:1 to 20:1	1% - 5%	1.28 to 6.4	Chemical On/Off	Hydrofluoric acids, tire cleaners, chlorine, & other harsh chemicals

Note: PVDF is available on all models for the most extreme chemicals.

Questions? Contact DEMA Customer Service or your Regional Manager.

## Wall and Cart Mounted Compressed Air Foam Systems

MixRite compressed air foam systems allow any length of hose installed on the outlet of dispenser. The hose length or foam wand nozzle size have no effect on the foam quality, which makes these dispensers ideal for foaming applications utilizing long runs of hose or pipe.



### Wall Mount Foam Systems

Compressed air foam systems include Mix Rite, foam chamber, 25 feet hose, and foam wand. Spray systems include MixRite, 25 feet hose and spray gun.

### Wall Mounted Units

<b>570WS</b>	Spray unit, 2% induction
<b>571WSR</b>	Spray and Rinse unit, 2% induction
<b>572WS</b>	Spray unit, 4% induction
<b>573WSR</b>	Spray and Rinse unit, 4% induction
<b>573WSFR</b>	Spray, foam and Rinse unit, 4% induction
<b>577WBSR</b>	Spray and Rinse bypass unit, 2% induction
<b>579WBSR</b>	Spray and Rinse bypass unit, 4% induction
<b>579WBSFR</b>	Spray, Foam, and Rinse bypass unit, 4% induction

Cart Mounted units are available for all systems listed. Substitute C for W in part number (e.g. 570CS for 570WS).



### 50.41.1 Strainer

200 Mesh (80 Micron)  
Strainer recommended on all installations.



### 57.11.1 Tip Kit

(570 and 571) For lean dilution ratios 750:1-2000. Includes 4 metering tips, 8 ft. 1/4" vinyl hose and 1/4"x3/8" barb adapter.



577 CBR



901.693T

## Mobile Cart Cleaning Systems

DEMA's mobile cart system puts everything needed for cleaning, sanitizing and foaming on two wheels. The unit is available with a wide selection of DEMA spray, foam and proportioning dispensers and is designed to provide a holding platform for chemicals and hangers for hoses. Ideal for use in shower rooms, large kitchens, food processing plants, store food preparation, storage areas and locations where permanent installations are impractical.

### Features:

- Pneumatic tires and plastic frame capable of heavy loads up to 600 lb (270 kg).
- A wide selection of DEMA dispensers.
- 25 feet (8 m) outlet hose and six feet (2 m) inlet hose on most units.
- Spray gun or foam wand included (for spray or foam units).
- Built in hose hangers and secure chemical storage area.

MODEL NO.	APPLICATION	DESCRIPTION (Dispenser page)
<b>MixRite Systems</b>	Spray & Foam	Wall mount units previous column
<b>901.606T.2</b>	Spray	Spray Clean 2 product plus rinse 3 ball valve actuated unit (pg 19)
<b>901.6300</b>	Spray	Rapid Fire 2 product plus rise dial actuated unit (pg 18)
<b>901.692T</b>	Foam	Foam Station 1 product plus rinse 2 ball valve actuated (pg 21)
<b>901.693T</b>	Foam	Foam Station 2 product plus rinse 3 ball valve actuated (pg 21)



## Chemical Injectors

DEMA manufactures two different types of injectors, each have their own way of controlling water flow. The C series injectors use one of three different water nozzle bushings to control water flow and the B series use an external bypass knob for controlling water flow. Injectors are available from 1/8" NPT up to 1" NPT. (BSP threaded injectors are available). When choosing an injector it is important to size the injector according to the application's water flow, not pipe size. Injector metering knobs can be supplied with a metering tip option (example 204CT) or metering screw option (example 204C).

Contact customer service for information on DEMA's B and C series injectors and selection tables (Industrial catalog 2007IND) or at [www.demaeng.com](http://www.demaeng.com).



204C



204B

## Special Injectors

### Model 201CHT

1/8" brass injector designed to draw up to 1-1 ratio at half gallon per minute (2 lpm) flow. Ideal for mixture of antifreeze and water for windshield washer filling.

## Injectors for Corrosive Applications

### Model P203C or P203CT

3/8" polypropylene plastic injector with flow rate of 4 GPM at 40 psi (16 liters per minute at 2.75 bar)

### Model 203BS.2 or 203BST.2

3/8" stainless steel injector with flow rate range of 3 to 9 gallons per minute at 40 psi (12 to 36 liters per minute at 2.75 bar)

1/2" size available (204BS.2 or 204BST.2)



P203C

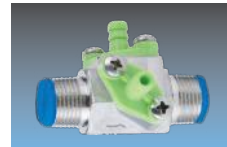


203BS.2

## Rocket Injectors



Single Barb 211.070



Dual Barb 221.098



Dual Barb, Quick Connect 321.086

DEMA's Rocket injectors are designed to put chemical compatibility and ease of maintenance into one injector. The body is made from stainless steel with polypropylene injection molded through the interior wetted area. The 316 SS nozzle is removable as well as the chemical barb. The units are color coded for the orifice size inside the injector. Dual barb and quick connect units are available.

### Options and Availability - NPT

ORIFICE SIZE	FLOW	MODEL NO. SINGLE BARB	MODEL NO. DUAL BARB
.029	.25 GPM	211.029	221.029
.040	.50 GPM	211.040	221.040
.051	.75 GPM	211.051	221.051
.057	1.1 GPM	211.057	221.057
.070	1.7 GPM	211.070	221.070
.083	2.3 GPM	211.083	221.083
.086	2.6 GPM	211.086	221.086
.098	3.4 GPM	211.098	221.098
.116	4.3 GPM	211.116	221.116
.125	5.3 GPM	211.125	221.125

### Features and Benefits:

- Stainless steel body for strength in harsh environments.
- Injection molded polypropylene inside injector for extreme chemical compatibility and durability.
- Removable 316 stainless steel nozzle for serviceability.
- Chemical barb is removable for service, color coded for nozzle configuration.

The QC Rocket is the industry's first quick connect injector utilizing a standard quick connect fitting. The standard quick connect is available off the shelf from many different sources and makes your Rocket ready to fly faster than ever before. It is the most efficient, most versatile, and only repairable injector on the market. The stainless steel nozzle is removable with a 7/32" Allen wrench and the barb can be taken off and cleaned out when necessary.

### Options and Availability - Quick Connect

ORIFICE SIZE	FLOW	MODEL NO. SINGLE BARB	MODEL NO. DUAL BARB
.029	.25 GPM	311.029	321.029
.040	.50 GPM	311.040	321.040
.051	.75 GPM	311.051	321.051
.057	1.1 GPM	311.057	321.057
.070	1.7 GPM	311.070	321.070
.083	2.3 GPM	311.083	321.083
.086	2.6 GPM	311.086	321.086
.098	3.4 GPM	311.098	321.098
.116	4.3 GPM	311.116	321.116
.125	5.3 GPM	311.125	321.125

## EasyDose

Our decades of knowledge and experience in electronics and metering chemical injection has created a simplistic yet highly advanced chemical injector to exceed the requirements for a wide variety of applications. Thanks to the rugged chemical durability of our pump components, EasyDose can be used in applications ranging from fertilization, water treatment, acid injection, cleaning chemicals and much more. EasyDose uses innovative features such as the DEMA Smart Dosing software, providing accurate proportional dosing over a wide range of flow rates. Our controller and pump module components are housed in outdoor-rated enclosures, designed for the harshest of temperatures and climate.



**Controller**



**Pump**



**Analog  
Flow  
Meter**

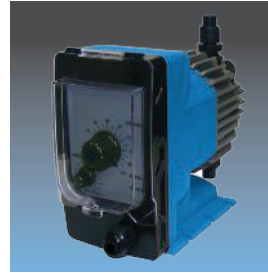
### Features:

- Prewired for 115/230VAC (smart voltage hookup, no switching required) or 12VDC.
- Electronic control system for pump speed control.
- One or two pumps, each pumps up to 1.7GPM (open flow), 1.1GPM at 60PSI.
- Drop in chemical reservoir float switch for auto shut off when chemical is depleted.
- Prewired line injection quill.
- Optional analog flow meter to measure chemical injection rate.
- 4-20mA capability to control pump rate.
- Outdoor rated rain resistant electrical enclosures with mounting hardware.
- Modular concept for easy add-on pumps or pump replacement.

DISPENSERS	MODEL NO.
EasyDose – AC 115/230 VAC	85AC.DP2
EasyDose – AC 115/230 VAC w/Flow Meter	85AC.DP2F
EasyDose – 12 VDC	85DC.DP2
EasyDose – 12 VDC w/Flow Meter	85DC.DP2F

## FlexFlow

DEMA's Flex Flow is the ideal solution for water treatment plants, car washes, and other industrial applications to deliver virtually any chemical directly into pressurized water lines. FlexFlow is easy to use and program with state-of-the-art technology that can vary chemical delivery volumes due to water flow and pressure changes for precise down stream solutions.



**0960.F**



**0960.A**

### Features and Benefits:

- For common industrial chemicals.
- Two adjustment knobs allow user to choose volume per stroke and strokes per minute.
- Optional dry pulse from water meter for accurate proportional chemical injection across changes in water flow and pressure.
- Manual or automatic adjust controls.
- Built in priming valve eliminates air in chemical feed line and potential for inaccurate dilutions.
- Dust cover protects display and keypad.
- Acid Injection version available with probe and digital display for easy programming and pH readings.
- Multiple models available for higher or lower pressure and higher volume.

DISPENSERS	MODEL NO.
FlexFlow for Common Industrial Chemicals	0960.F
FlexFlow for Acid Injection	0960.A

## APPROVALS

### DEMA Engineering Company

St. Louis, MO Headquarters  
ISO 9001 Certified

#### Action Gap Backflow Preventer

ASSE 1055-1997  
IAPMO  
CSA  
Various U.S. states and cities  
Australia

#### Ultra Gap Air Gap Proportioner

ASSE 1055-1997  
IAPMO  
ASME  
CSA  
Various U.S. states and cities  
KIWA-Netherlands  
Australia  
DVGW-Germany  
WRC-United Kingdom

#### Pressure Indicating Tee 68-6

ASSE 1055-1997  
IAPMO  
ASME

#### Model 153 and 154

ASSE 1055-97

#### 633 Valve Body

NSF-61

#### 58-1 Siphon Breaker

ASSE 1001  
CSA

#### DEMAMaster Dishwash Series

CSA

#### TITAN Dishwash

CE, CSA

#### ATLAS Laundry

CE, CSA

#### Aurora Laundry

CE

### METRIC CONVERSIONS

TO GO FROM	MULTIPLY BY	TO GET
Gallons	3.785	Liters
Ounces	29.57	Milliliters
PSI	0.068	Bar
Inches	25.4	Millimeters
Fahrenheit	$5/9(F-32)$	Celsius
Liters	0.2642	Gallons
Milliliters	0.34	Ounces
Bar	14.5	PSI
Millimeters	0.0394	Inches
Celsius	$9/5C+32$	Fahrenheit



**DEMA**®

**DEMA Global Headquarters**

10020 Big Bend Boulevard  
St. Louis, MO 63122  
Phone: (800) 325-3362 | (314) 966-3533  
Fax: (314) 965-8319  
www.demaeng.com  
email: sales@demaeng.com

**DEMA Europe**

Phone: 31-(0)-36-522-7006  
email: sales@demaurope.com

**DEMA Australia**

Phone: 61-2-9525-5177  
email: sales@demaust.com

**DEMA Latin America**

Mobile: (5511) 98579-3477  
email: omarpuras@uol.com.br

**DEMA Central America**

Mobile: +506 70146588  
email: jorge@demaeng.com

**DEMA Southeast Asia**

Mobile: +6012 476 7385  
email: kevinlim@demaeng.com

**DEMA China Representative Office**

Phone & Fax: 86 21-5424 6629  
email: johnzhu@demachina.com.cn

**Viking, LLC**

Phone: (800) 441-1343  
Fax: (570) 645-3679  
www.thevikingbowl.com  
email: sales@thevikingbowl.com

**GC Valves, LLC**

Phone: (800) 828-0484  
Fax: (704) 588-5831  
www.gcvalves.com  
email: info@gcvalves.com