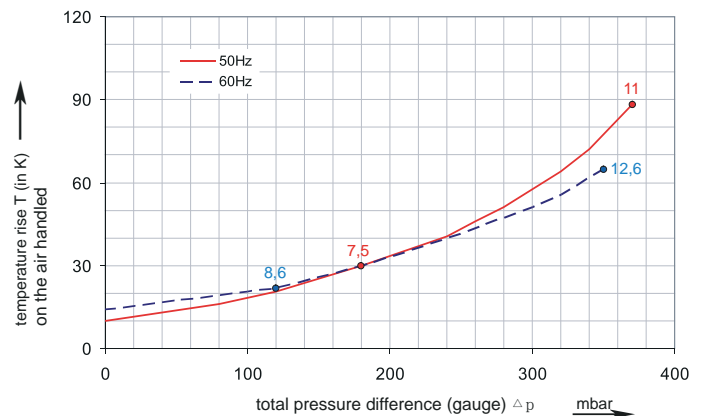
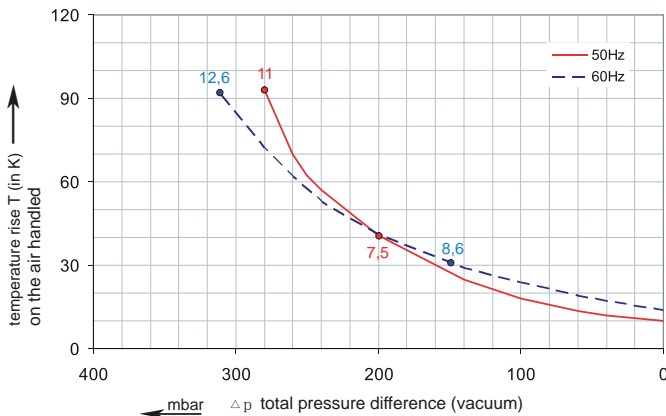
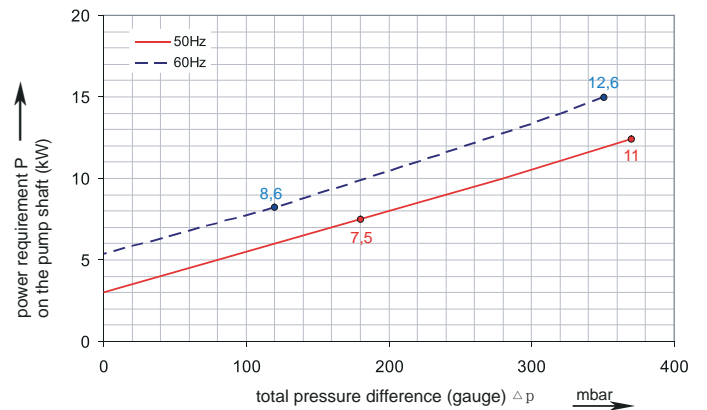
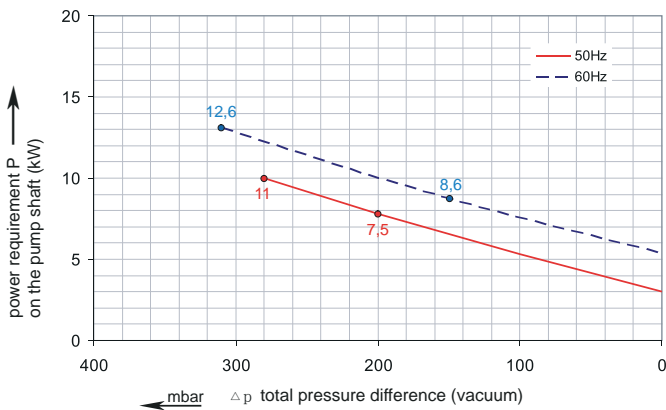
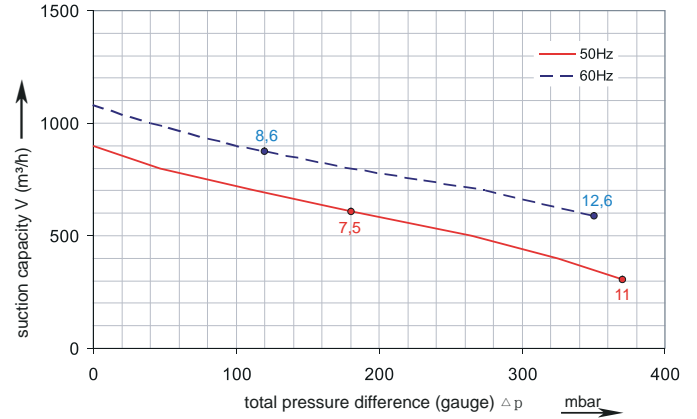
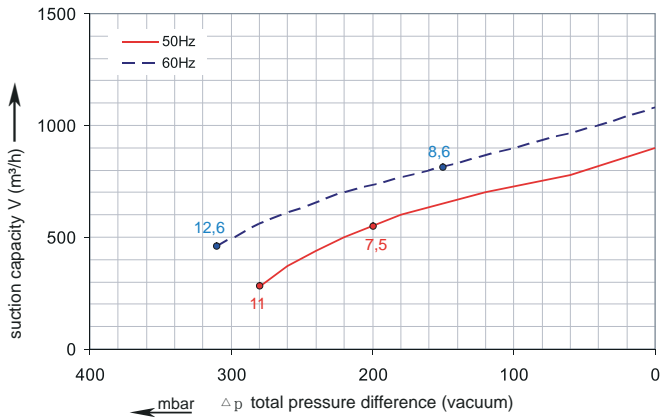


Performance Curve for Vacuum

Performance Curve for Pressure



The performance curves are based on air at a temperature of 15 °C and an atmospheric pressure of 1013 mbar with a tolerance of +/- 10 %. The total pressure differences are valid for suction and ambient temperatures up to 25 °C. For other conditions please confer with us.

Each Proair Blower can be applied both as vacuum pump and compressor in continuous operation over the total stated performance curve range. The motors are available as standard for the input voltage range of 50 and 60 Hz and for protection category IP 55 as well as approved for UL and CSA.

Selection and ordering data

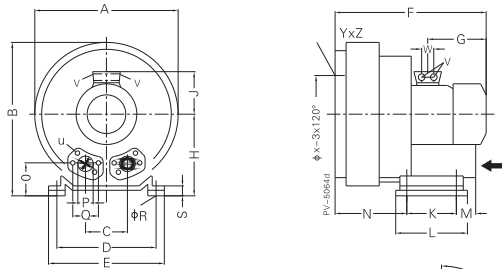
A-8MD

Order No.	Fre- quency	Rated power	Input voltage		Input current		Permissible total differential pressure ²⁾		Sound pressure level ³⁾	Weight ca.
			Hz	kW	V	A	Vacuum mbar	Compressor mbar		

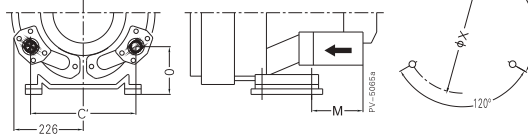
3~ 50/60 Hz IP55 isulation material class F 1)

A8MD-227	50	7.5	345D ... 415D	600Y...720Y	16.7D	9.6Y	-200	180	74	91
	60	8.6	380D ... 480D	660Y...720Y	17.3D	10.0Y	-150	120	78	91
A8MD-237	50	11.0	345D ... 415D	600Y...720Y	28.0D	16.2Y	-280	370	74	110
	60	12.6	380D ... 480D	660Y...720Y	29.0D	16.7Y	-310	350	78	110

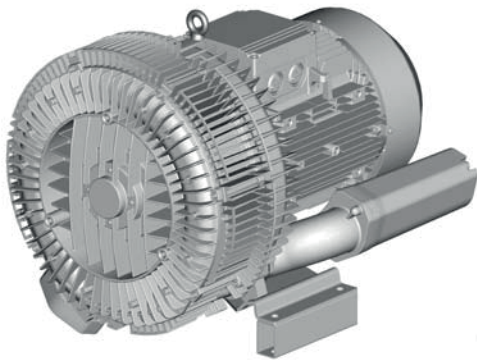
A8MD-227



A8MD-237



	A	B	C	C'	D	E	F	G	H	J	K	L	M	N	O	φP	φR	S	V	W	φX	YxZ	X-Holes	
A8MD-227	3~	500	550	152	-	356	394	589	247	300	167	170	217	-	236	125	G21/2	15	66	4xM32X1.5	42	286	M12x20	0°/120°/240°
A8MD-237	3~	500	550	-	336	356	394	694	318	300	197	170	217	312	212	165	G21/2	15	66	4xM40X1.5	54	286	M12x20	0°/120°/240°



Other voltage ranges

A-8MD

50Hz

60Hz



3~

185...225 V D/320...390 V Y

200...240 V D/345...415 V Y

2 1

200...240 V D/345...415 V Y

200...275 V D/380...480 V Y

2 6

345...415 V D

380...480 V D

2 7

500 V D

575VD

C 5

Machines according to the ATEX norm 94/4 EG are available for the whole performance range.

Following types available: Category 3 G, 3/2 G, 3 D and 3/2 D.

Further voltage range on request; please quote in plain text.

All Proair Blowers achieve the standards and norms of the low voltage directive (LVD)2006/95/EC, rotating electrotechnical motor EN 60034-1-2004, electromagnetic compatibility(EMC)EN55014-1/2,EN61000-2/-3/-4/-6.

- 1) For standard UL for ELECTRIC MOTOR UL 1004-1.
- 2) Relief-valve are available for limiting differential pressure.
- 3) Measuring-surface sound-pressure level acc. to DIN EN 21680, measured at a distance of 1 m. The pump is throttled to an average suction pressure, a hose is connected to the discharge side (compressor) / suction side (vacuum pump), but is not fitted with relief valves.

The motors are designed according to the DIN EN 60 034 / DIN IEC 34-1 and temperature class F.

For the three phase machines the tolerances are +/- 10 % for fixed voltage and +/- 5 % for voltage range.

The single phase machines are designed with a +/- 5 % tolerances. If only 90 % of the maximum allowed pressure will be used for the continuous operating then the allowed voltage range add to +/- 10 %.

For all single and three phase machines which designed according to the UL and CSA norm (UL 1004-1) the maximum allowed voltage tolerances are - 10 % resp. + 6 %.

The frequency tolerance is maximum +/- 2 %.

Changes in particular the quoted performance curve, data and weights without prior notice. The figures are without obligations.

03.2015