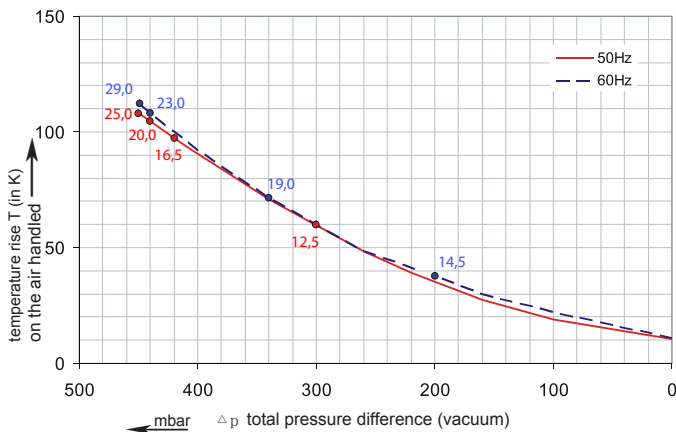
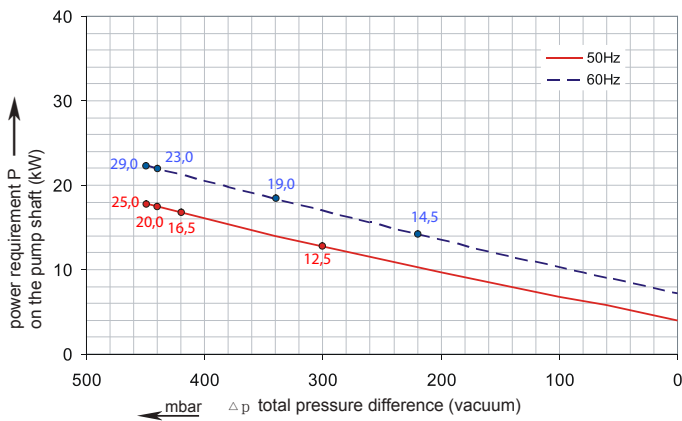
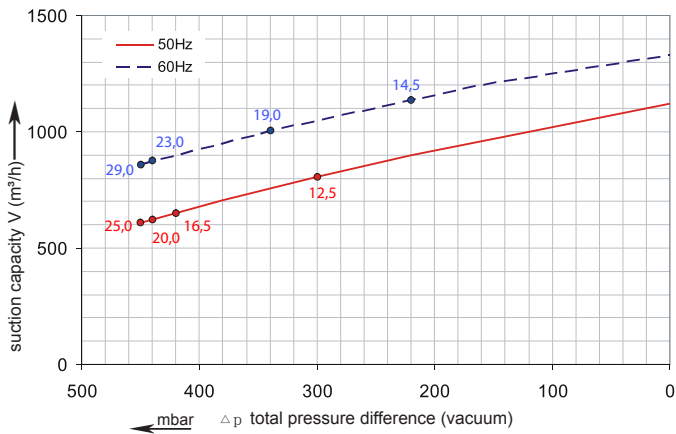
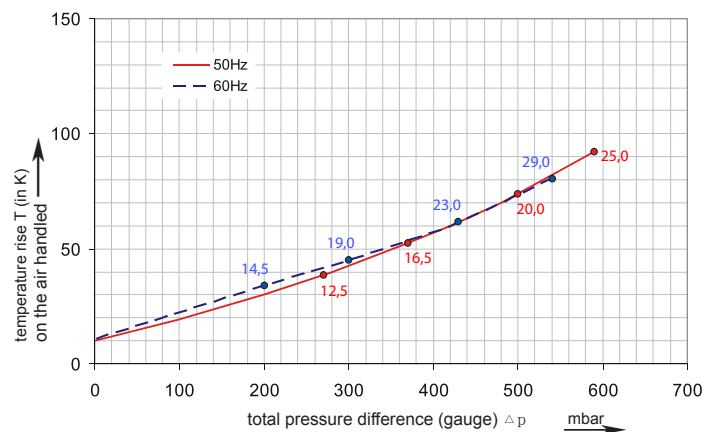
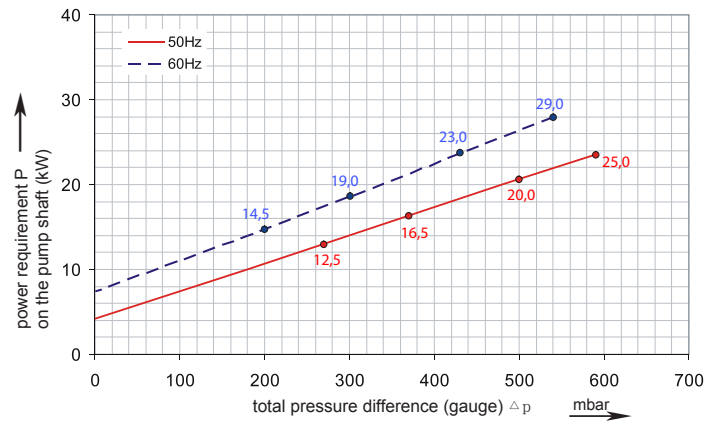
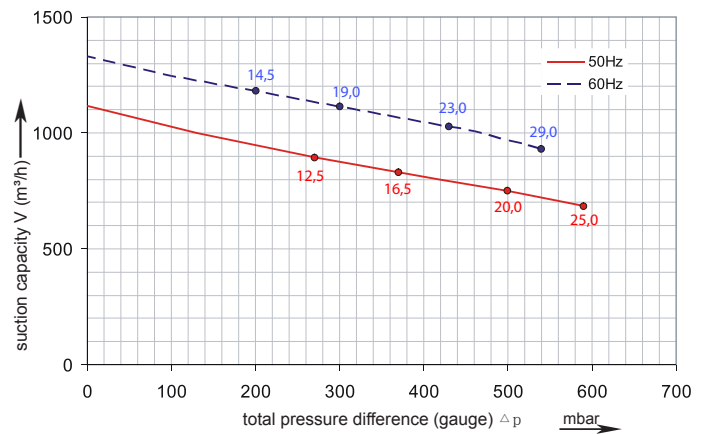


Performance Curve for Vacuum



Performance Curve for Pressure



The performance curves are based on air at a temperature of 15 °C and an atmospheric pressure of 1013 mbar with a tolerance of +/- 10 %. The total pressure differences are valid for suction and ambient temperatures up to 25 °C. For other conditions please confer with us.

Each A9TD blower can be applied both as vacuum pump and compressor in continuous operation over the total stated performance curve range. The motors are available as standard for the input voltage range of 50 and 60 Hz and for protection category IP 55 as well as approved for UL and CSA.

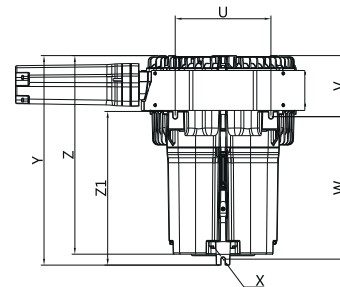
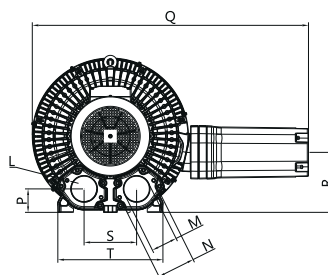
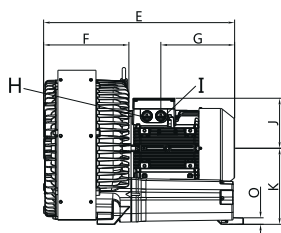
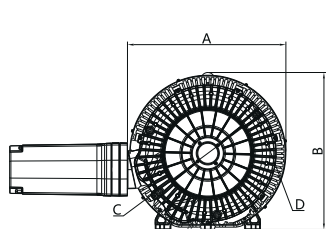
Selection and ordering data

A9TD

Order No.	Fre- quency	Rated power	Input voltage		Input current		Permissible total differential pressure ²⁾		Sound pressure level ³⁾	Weight ca.
							Vacuum mbar	Compressor mbar		
	Hz	kW	V		A					

3~ 50/60 Hz IP55 isulation material class F 1)

A9TD-217	50	12.5	345D ... 415D	600Y...720Y	28.0D	16.2Y	-300	270	74	187
	60	14.5	380D ... 480D	660Y...720Y	29.0D	16.7Y	-220	200	84	187
A9TD-227	50	16.5	345D ... 415D	600Y...720Y	35.0D	20.0Y	-420	370	74	197
	60	19.0	380D ... 480D	660Y...720Y	36.5D	21.0Y	-340	300	84	197
A9TD-237	50	20.0	345D ... 415D	600Y...720Y	40.0D	23.0Y	-440	500	74	204
	60	23.0	380D ... 480D	660Y...720Y	42.0D	24.2Y	-440	430	84	204
A9TD-247	50	25.0	345D ... 415D	600Y...720Y	52.0D	30.0Y	-450	590	74	211
	60	29.0	380D ... 480D	660Y...720Y	52.0D	30.0Y	-450	540	84	211



	A	B	C	D	E	F	G	H	I	J	K	L	M	N	O	P	Q	R	S	T	U	V	W	X	Y	Z	Z1
A9TD-217	624	618	490	M12X20	752	336	291	M40X1.5	M40X1.5	197	299	M12X30	G4	150	25	92	1089	236	207	414	360	229	535	15	787	746	577
A9TD-227	624	618	490	M12X20	752	336	291	M40X1.5	M40X1.5	197	299	M12X30	G4	150	25	92	1089	236	207	414	360	229	535	15	787	746	577
A9TD-237	624	618	490	M12X20	752	336	291	M40X1.5	M40X1.5	197	299	M12X30	G4	150	25	92	1089	236	207	414	360	229	535	15	787	746	577
A9TD-247	624	618	490	M12X20	752	336	291	M40X1.5	M40X1.5	197	299	M12X30	G4	150	25	92	1089	236	207	414	360	229	535	15	787	746	577



Other voltage ranges

A9TD- 2 □ □

50Hz

60Hz



3~

185...225 V D/320...390 V Y

200...240 V D/345...415 V Y

3 1

200...240 V D/345...415 V Y

200...275 V D/380...480 V Y

3 6

345...415 V D

380...480 V D

3 7

500 V D

575VD

C 5

Machines according to the ATEX norm 94/4 EG are available for the whole performance range.

Following types available: Category 3 G, 3/2 G, 3 D and 3/2 D.

Further voltage range on request; please quote in plain text.

All A9TD achieve the standards and norms of the low voltage directive (LVD)2006/95/EC, rotating electrotechnical motor EN 60034-1-2004, electromagnetic compatibility(EMC)EN55014-1/2,EN61000-2/-3/-4/-6.

- 1) For standard UL for ELECTRIC MOTOR UL 1004-1.
- 2) Relief-valve are available for limiting differential pressure.
- 3) Measuring-surface sound-pressure level acc. to DIN EN 21680, measured at a distance of 1 m. The pump is throttled to an average suction pressure, a hose is connected to the discharge side (compressor) / suction side (vacuum pump), but is not fitted with relief valves.

The motors are designed according to the DIN EN 60 034 / DIN IEC 34-1 and temperature class F.

For the three phase machines the tolerances are +/- 10 % for fixed voltage and +/- 5 % for voltage range.

The single phase machines are designed with a +/- 5 % tolerances. If only 90 % of the maxium allowed pressure will be used for the continuousoperating then the allowed voltage range add to +/- 10 %.

For all single and three phase machines which designed according to the UL and CSA norm (UL 1004-1) the maximum allowed voltage tolerances are - 10 % resp. + 6 %.

The frequency tolerance is maximum +/- 2 %.

Changes in particular the quoted performance curve, datas and weights without prior notice. The figures are without obligations.

PROAIR SIDE CHANNEL BLOWER

PROAIR