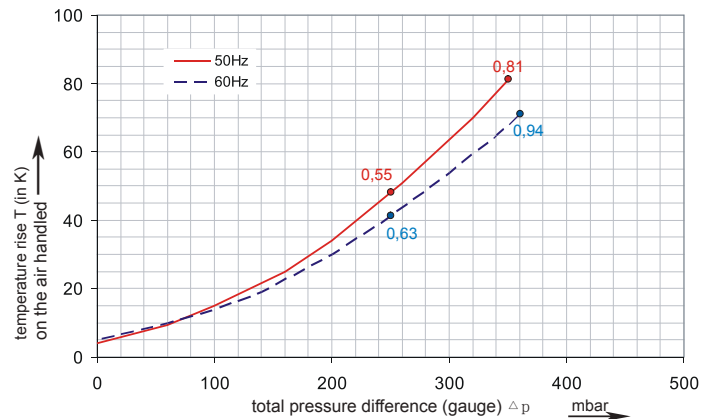
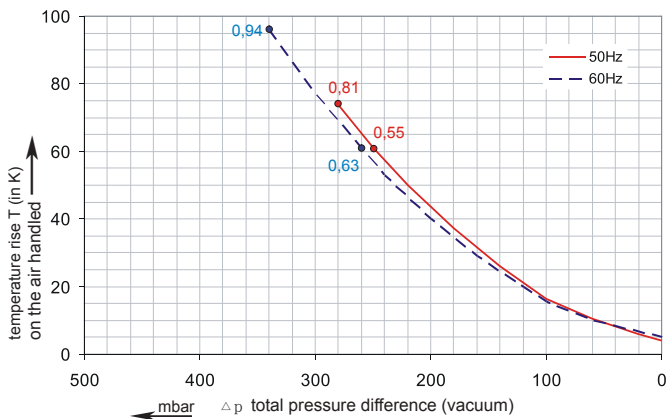
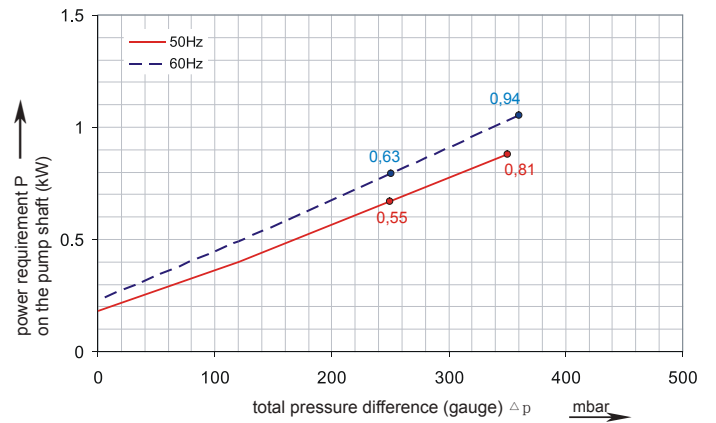
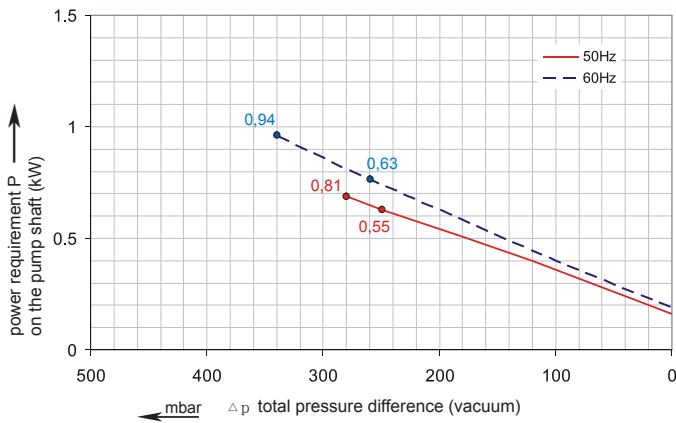
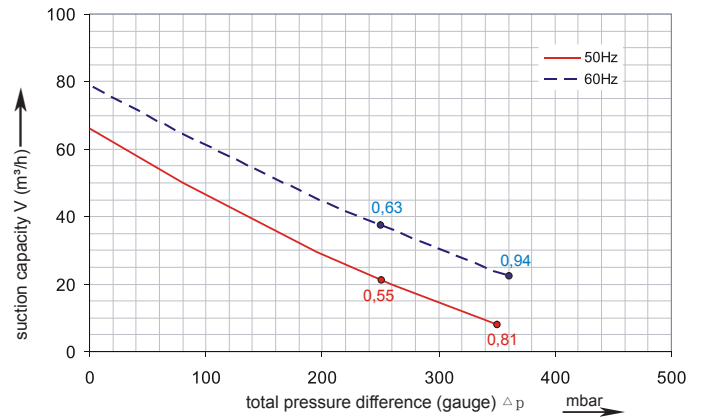
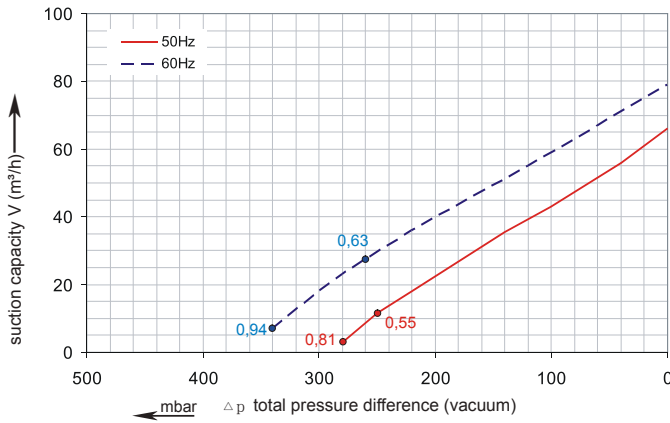


Performance Curve for Vacuum

Performance Curve for Pressure



The performance curves are based on air at a temperature of 15 °C and an atmospheric pressure of 1013 mbar with a tolerance of +/- 10 %. The total pressure differences are valid for suction and ambient temperatures up to 25 °C. For other conditions please confer with us.

Each Proair B-MS Series blower type can be applied both as vacuum pump and compressor in continuous operation over the total stated performance curve range. The motors are available as standard for the input voltage range of 50 and 60 Hz and for protection category IP 55 as well as approved for UL and CSA.

Selection and ordering data

B3MS

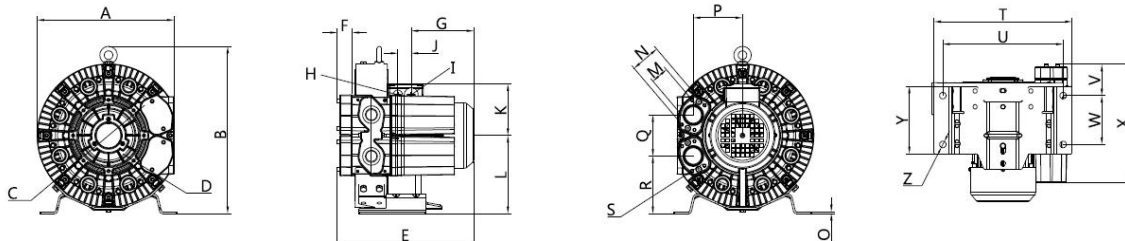
Order No.	Fre- quency	Rated power	Input voltage		Input current		Permissible total differential pressure ²⁾		Sound pressure level ³⁾	Weight ca.
			Hz	kW	V	A	Vacuum mbar	Compressor mbar		

3~ 50/60 Hz IP55 insulation material class F 1)

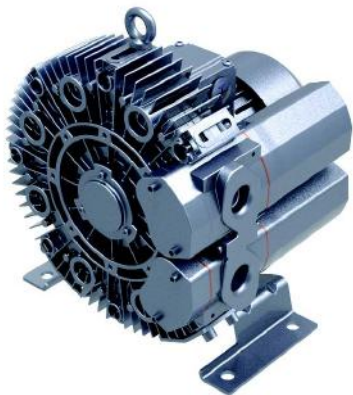
B3MS-106	50	0.55	200D ... 240D	345Y...415Y	2.8D	1.6Y	-250	250	57	16
	60	0.63	220D ... 275D	380Y...480Y	3.0D	1.7Y	-260	250	62	16
B3MS-116	50	0.81	200D ... 240D	345Y...415Y	4.0D	2.3Y	-280	350	57	17
	60	0.94	220D ... 275D	380Y...480Y	4.0D	2.3Y	-340	360	62	17

1~ 50/60 Hz IP55 with attached condenser for continuous operation

B3MS-571	50	0.94	230		18.1	9.1	-280	350	57	18
	60	1.1	230		18.0	9.0	-290	350	62	18



	Ph	A	B	C	D	E	F	G	H	I	J	K	L	M	N	O	P	Q	R	S	T	U	V	W	X	Z
B3MS-106	3~	313	378	153	M6X15	295	31	153	M16X1.5	M32X1.5	32	120	177	G1 _{1/4}	64	4	114	39	130	M6X17	325	290	67	105	256	14
B3MS-116	3~	313	378	153	M6X15	295	31	153	M16X1.5	M32X1.5	32	120	177	G1 _{1/4}	64	4	114	39	130	M6X17	325	290	67	105	256	14
B3MS-571	1~	313	378	153	M6X15	295	31	153	M16X1.5	M32X1.5	32	120	177	G1 _{1/4}	64	4	114	39	130	M6X17	325	290	67	105	256	14



Other voltage ranges

		B-3MS	
50Hz	60Hz	↑	↑
3~			
185...225 V D/320...390 V Y	200...240 V D/345...415 V Y	1	1
200...240 V D/345...415 V Y	200...275 V D/380...480 V Y	1	6
345...415 V D	380...480 V D	V	7
500 V D	575VD	D	5
Machines according to the ATEX norm 94/4 EG are available for the whole performance range. Following types available: Category 3 G, 3/2 G, 3 D and 3/2 D.			
1~			
100 / 200 V	100 / 200 V	7	4
115 / 230 V	115 / 230 V	7	5
230V	---	5	1

Further voltage range on request; please quote in plain text.

All Proair B-MS series blowers achieve the standards and norms of the low voltage directive (LVD)2006/95/EC, rotating electrotechnical motor EN 60034-1-2004, electromagnetic compatibility (EMC)EN55014-1/2, EN61000-2/-3/-4/-6.

- 1) For standard UL for ELECTRIC MOTOR UL 1004-1.
- 2) Relief-valve are available for limiting differential pressure.
- 3) Measuring-surface sound-pressure level acc. to DIN EN 21680, measured at a distance of 1 m. The pump is throttled to an average suction pressure, a hose is connected to the discharge side (compressor) / suction side (vacuum pump), but is not fitted with relief valves.

The motors are designed according to the DIN EN 60 034 / DIN IEC 34-1 and temperature class F.

For the three phase machines the tolerances are +/- 10 % for fixed voltage and +/- 5 % for voltage range.

The single phase machines are designed with a +/- 5 % tolerances. If only 90 % of the maximum allowed pressure will be used for the continuous operating then the allowed voltage range add to +/- 10 %.

For all single and three phase machines which designed according to the UL and CSA norm (UL 1004-1) the maximum allowed voltage tolerances are - 10 % resp. + 6 %.

The frequency tolerance is maximum +/- 2 %.

Changes in particular the quoted performance curve, datas and weights without prior notice. The figures are without obligations.